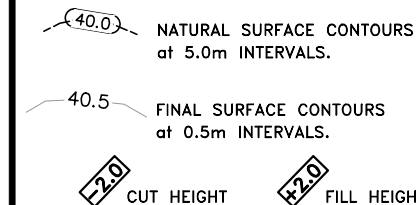
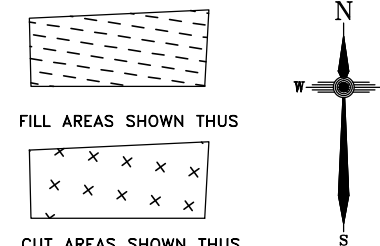


MON TERRE RIDGE ESTATE STAGE 2

Disclosure Plan

MON TERRE RIDGE ESTATE
LITTLE MOUNTAIN
PROPOSED LOT 10



Note
Countour interval is shown
at 0.5 metres AHD.

Revisions	Surveyed	Drawn	Checked	Passed	Date
A					19.10.15



SUNSHINE COAST
PO Box 1073, Buddina QLD 4575 Ph: (07) 5437 8833
mail@definiumlws.com ABN: 42 602 554 094
www.definiumlwsaustralia.com ACN: 602 554 094
WESTERN DOWNS DARLING DOWNS MACKAY

Signed JB
Cadastral Surveyor/Director
Date 19/10/2015

Map Ref.: 9544-34124

Horiz. Datum MGA94 Z56	Vert. Datum AHD
Origin SP246943	Origin PSM 93860
	RL 80.365 AHD
Parish: BRIBIE	County: CANNING
Locality: LITTLE MOUNTAIN	
Local Government: SUNSHINE COAST REGIONAL COUNCIL	

SHEET 1 OF 1 Scale At A3 size
COMPUTER FILE 11692-S2-D Remaining Lots
DRAWING NUMBER REV.
11692-S2-D10 A

DISCLOSURE PLAN FOR PROPOSED ALLOTMENT 10

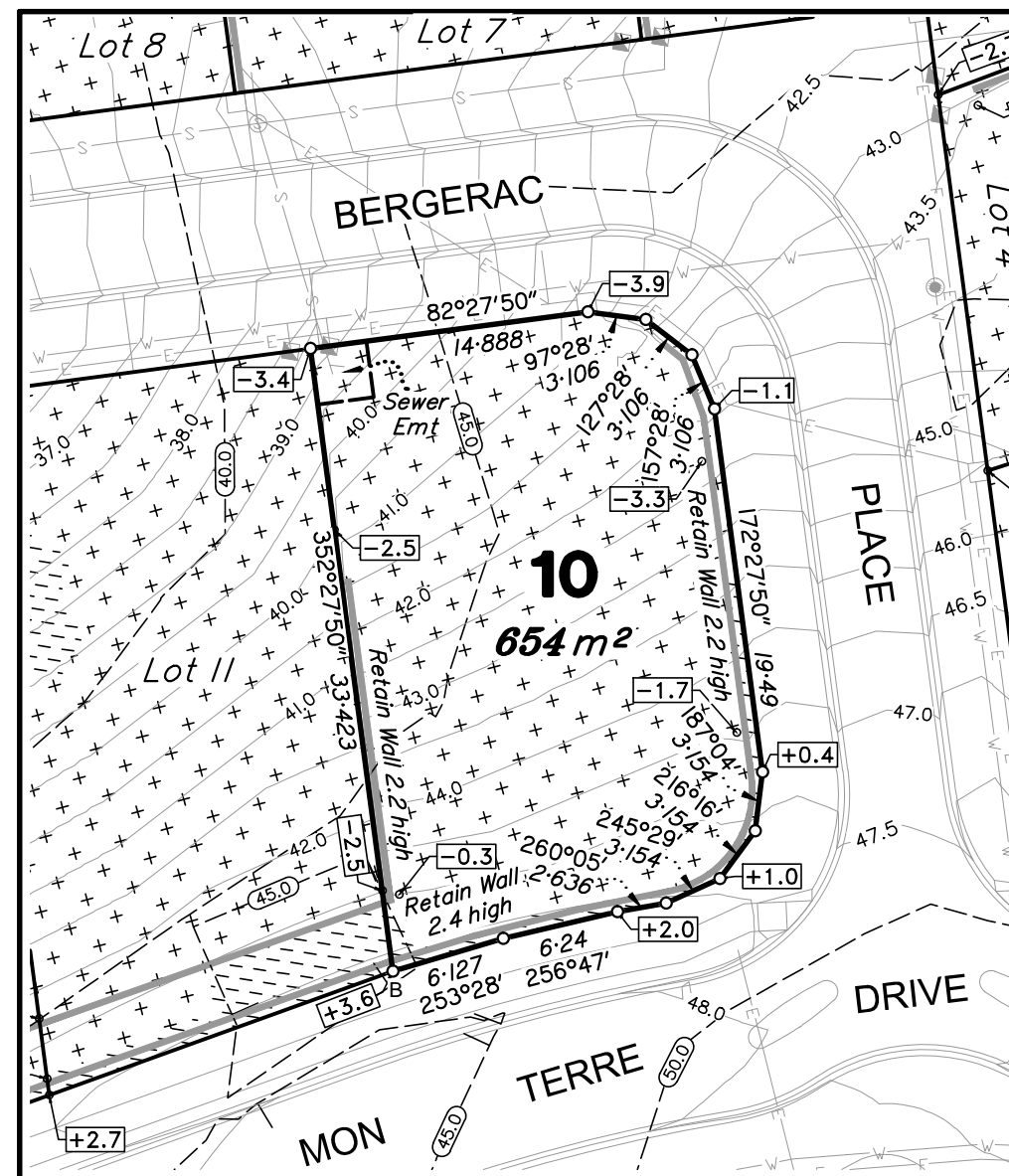
Dated 19th October 2015

This plan shows details of Proposed Allotment 10 on the Proposal Plan 10010 DA-106 Rev B dated 14 February 2014 which complies with a Subdivision Application REC 11/0067 approved by Sunshine Coast Council on the 26th July 2012, subject to conditions.

The metes and bounds description of the area being proposed allotment 10 described as part of Lot 601 on SP246943, Parish of Bribie, County of Canning and situated at Caloundra Road, Little Mountain, commencing at a point being the Northern most point of Lot 76 on SP246943 and thence bounding off in a Northwesterly direction on a bearing of 282°04'40" and a distance of 116.272 to proposed allotment 10, and from this point of commencement, thence bounded by lines:

- Bearing 352°27'50" for a distance of 33.423 metres
- Bearing 82°27'50" for a distance of 14.888 metres
- Bearing 97°28' for a distance of 3.106 metres
- Bearing 127°28' for a distance of 3.106 metres
- Bearing 157°28' for a distance of 3.106 metres
- Bearing 172°27'50" for a distance of 19.49 metres
- Bearing 187°04' for a distance of 3.154 metres
- Bearing 216°16' for a distance of 3.154 metres
- Bearing 245°29' for a distance of 3.154 metres
- Bearing 260°05' for a distance of 2.636 metres
- Bearing 256°47' for a distance of 6.24 metres
- Bearing 253°28' for a distance of 6.127 metres

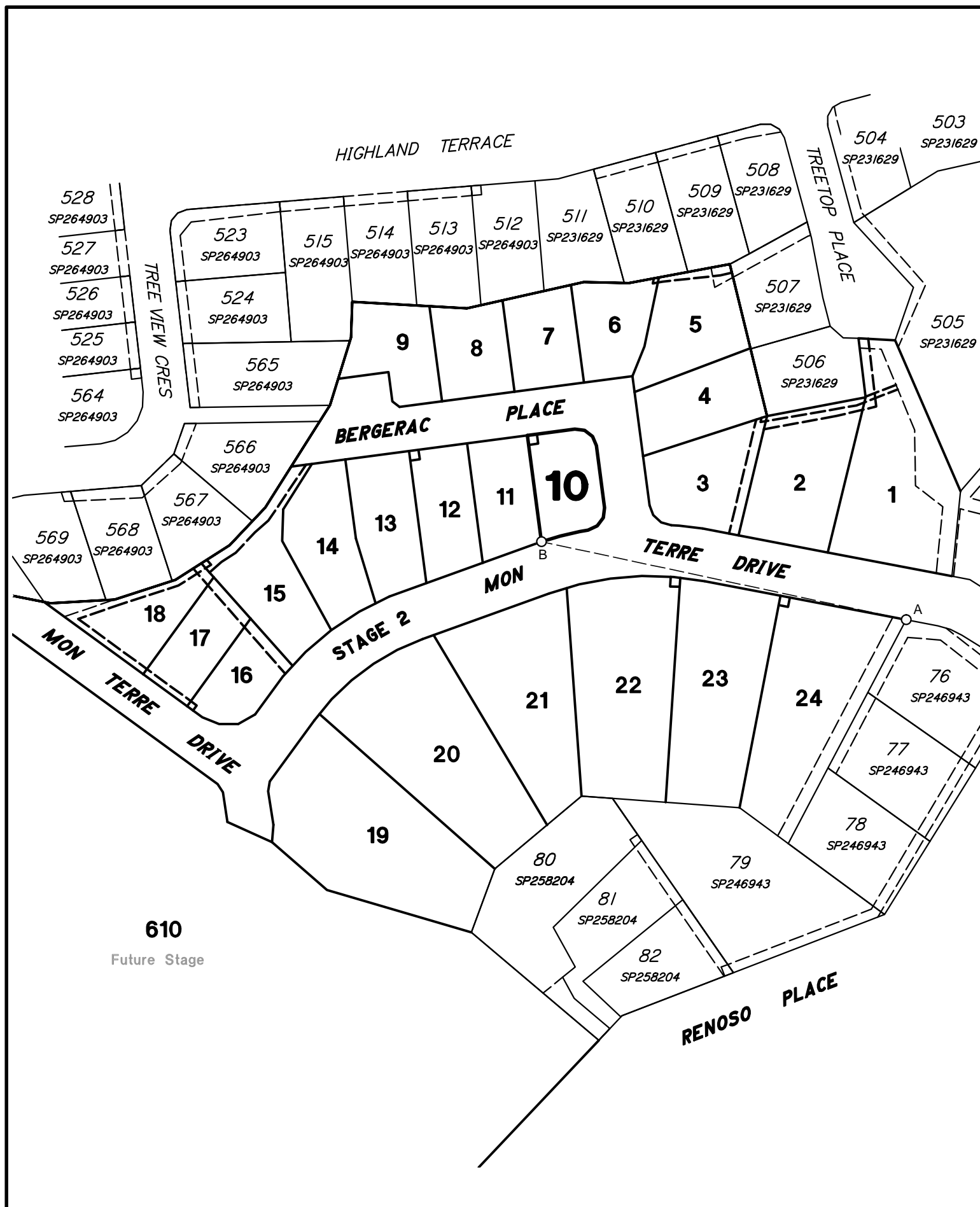
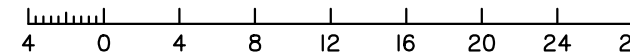
to the point of commencement and containing an area of 654 square metres, more or less.



DETAIL SURVEY COMPLETED 13/12/2010.

APPROXIMATE FILL HEIGHTS PROVIDED BY
CONCEPT ENGINEERING - 30/03/2015.
ENGINEERING DESIGN BY
CONCEPT ENGINEERING
PLANS DP-09
DATED 02/06/2014.

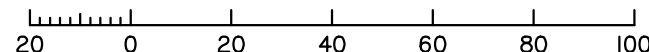
Scale 1:400 - Lengths are in Metres.



CADASTRAL CONNECTION

A - B 282°04'40" 116.272

Scale 1:1500 - Lengths are in Metres.



2015/11/05 W: Definium Jobs Current \1692-S2-D Remaining Lots.dwg