

**MON TERRE
RIDGE ESTATE
STAGE 3**

Disclosure Plan

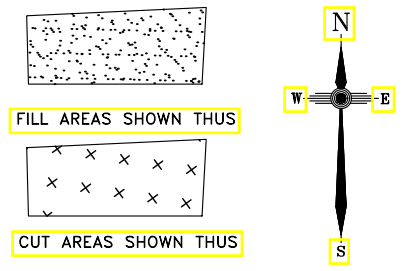
**MON TERRE RIDGE
ESTATE**

LITTLE MOUNTAIN

Bayonne Close, Little Mountain

PROPOSED LOT 44

ALL FILL WITHIN ALLOTMENTS IS TO
LEVEL 1 INSPECTION AND TESTING IN
ACCORDANCE WITH AS3798-2007



-8.5 FINAL SURFACE CONTOURS
at 0.25m INTERVALS.

2.0 CUT HEIGHT 2.0 FILL HEIGHT

Note
Contour interval is shown at
0.5 metres.

Revisions	Surveyed	Drawn	Checked	Passed	Date	
B	LOTS 40-49,66,67	DSQ	JJ	AJP	AJP	30.07.18
A	ORIGINAL PLAN	DSQ	JJ	AJP	AJP	26.06.18



SUNSHINE COAST
PO Box 1073, Buddina QLD 4575 Ph: (07) 5437 8555
mail@dsqsurvey.com ABN: 91 615 043 251
www.dsqsurvey.com ACN: 615 043 251
WESTERN DOWNS

Signed *JB*
Cadastral Surveyor/Director
Date 28/06/2018

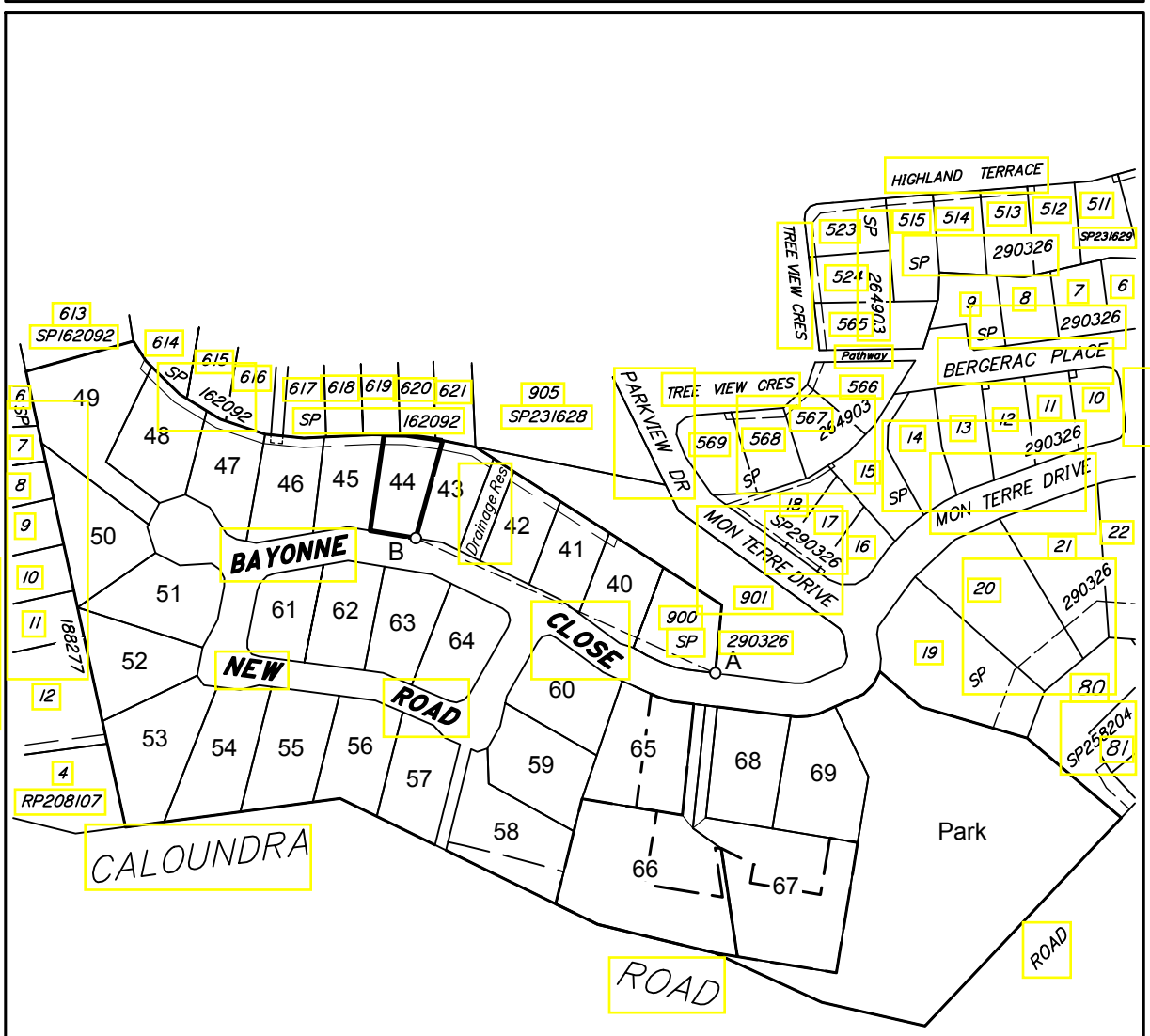
Map Ref.: 9544-34124
Horiz. Datum MGA Z56 Vert. Datum AHD
Origin SP246943 Origin PSM 93860
RL 60.365 AHD
Locality: LITTLE MOUNTAIN
Local Government: SUNSHINE COAST REGIONAL COUNCIL

SHEET 1 OF 1 Scale At A3 size
COMPUTER FILE 11692-S3 DIS Rev B
DRAWING NUMBER 11692 S3 D-44 REV. B

**DISCLOSURE PLAN
FOR PROPOSED ALLOTMENT 44**
Dated 27th June 2018

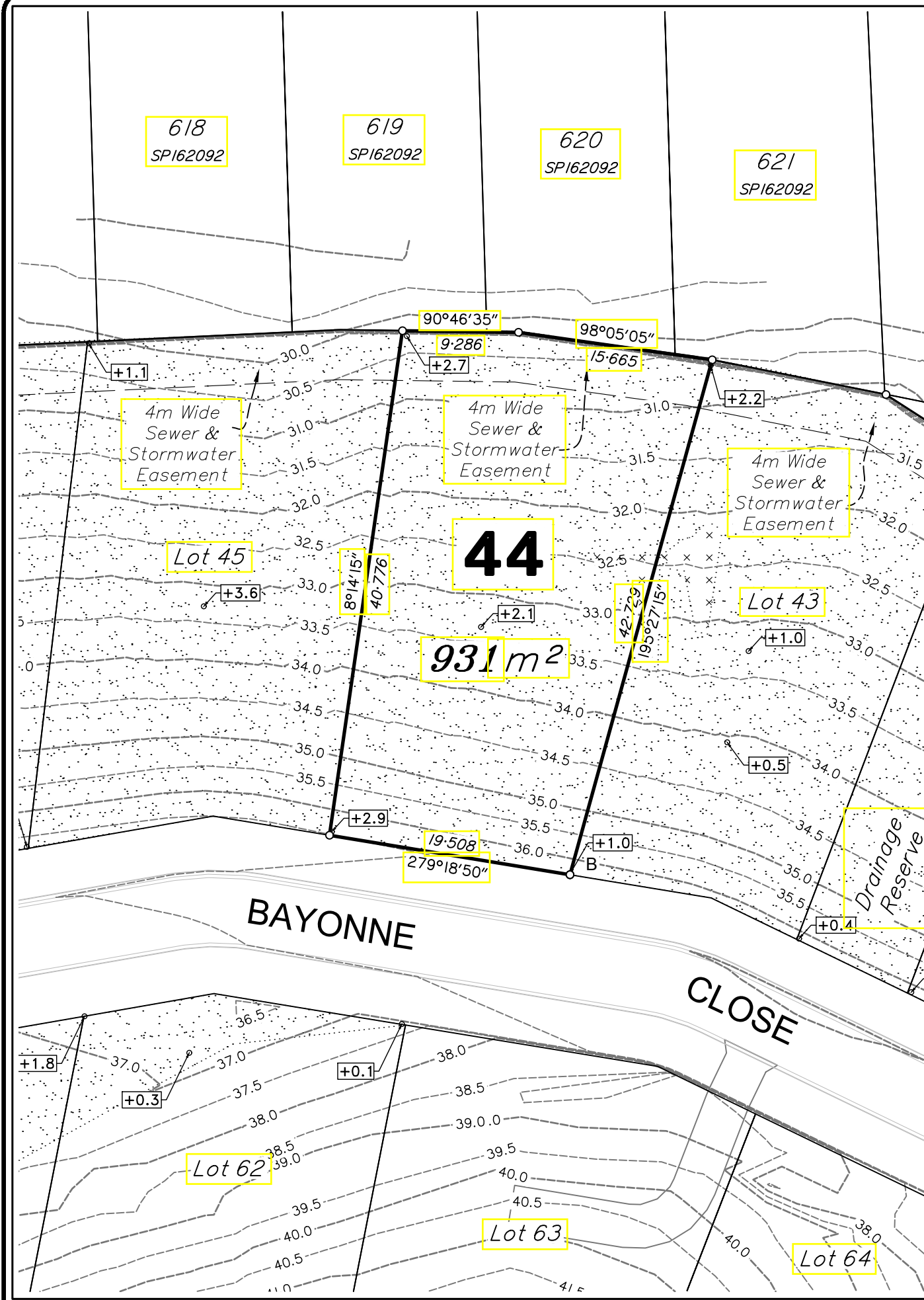
This plan shows details of proposed allotment 44 on the Plan of Development 07019 DA-01 dated 25 February 2010 which complies with a Subdivision Application approved by Sunshine Coast Regional Council, subject to conditions.

The area being proposed allotment 44 described as part of Lot 611 on SP290326, and situated at Bayonne Close, Little Mountain. The allotment is located from the south eastern most point of Lot 900 on SP290326 to proposed allotment 44 with a cadastral connection (A-B) as shown, containing an area of 931 square metres, more or less.

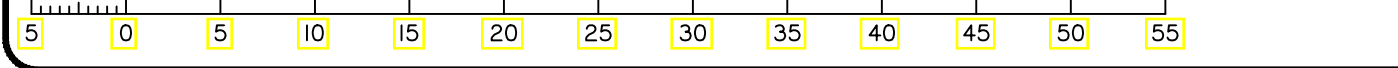


DETAIL SURVEY COMPLETED 13/12/2010.

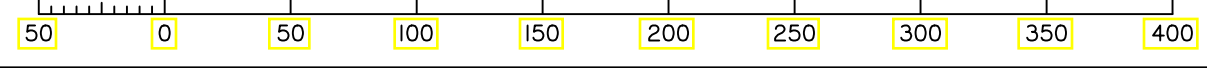
Cadastral Connection
A-B 294°16'20" 138.695



Scale 1:400 - Lengths are in Metres.



Scale 1:3000 - Lengths are in Metres.



2018/107/30 W:\DSQ_Data\Jobs\Current\11692 Concept Engineering\Data Survey\Drafting\Disclosure\11692-S3 DIS Rev B.dwg