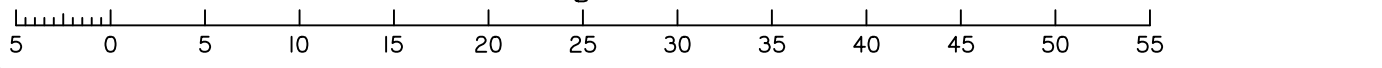


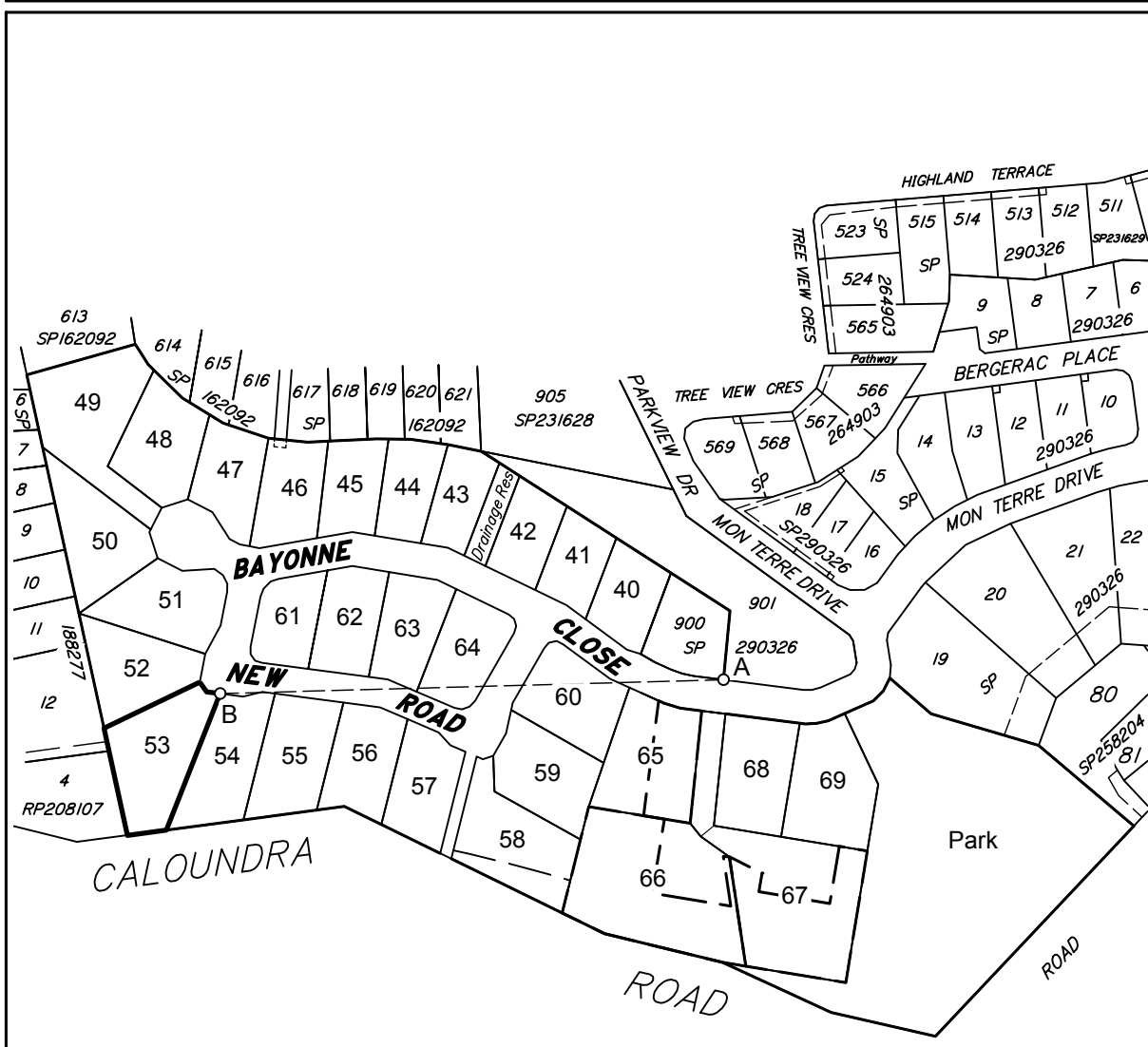
Scale 1:400 - Lengths are in Metres.



### DISCLOSURE PLAN FOR PROPOSED ALLOTMENT 53 Dated 27th June 2018

This plan shows details of proposed allotment 53 on the Plan of Development 07019 DA-01 dated 25 February 2010 which complies with a Subdivision Application approved by Sunshine Coast Regional Council, subject to conditions.

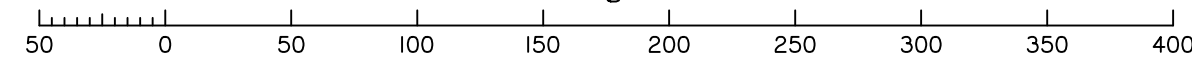
The area being proposed allotment 53 described as part of Lot 611 on SP290326, and situated at Bayonne Close, Little Mountain. The allotment is located from the south eastern most point of Lot 900 on SP290326 to proposed allotment 53 with a cadastral connection (A-B) as shown, containing an area of 1762 square metres, more or less.



DETAIL SURVEY COMPLETED 13/12/2010.

Cadastral Connection  
A-B 268°25'40" 210.235

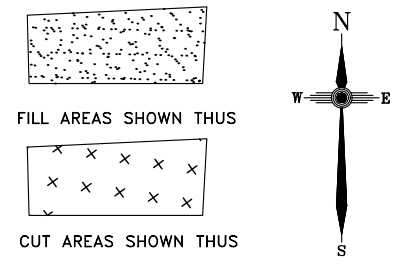
Scale 1:3000 - Lengths are in Metres.



### MON TERRE RIDGE ESTATE STAGE 3

### Disclosure Plan MON TERRE RIDGE ESTATE LITTLE MOUNTAIN Bayonne Close, Little Mountain PROPOSED LOT 53

ALL FILL WITHIN ALLOTMENTS IS TO LEVEL 1 INSPECTION AND TESTING IN ACCORDANCE WITH AS3798-2007



-8.5 FINAL SURFACE CONTOURS at 0.25m INTERVALS.

CUT HEIGHT FILL HEIGHT

Note  
Contour interval is shown at 0.5 metres.

Revisions	Surveyed	Drawn	Checked	Passed	Date	
A	ORIGINAL PLAN	DSQ	JJ	AJP	AJP	26.06.18

SUNSHINE COAST  
PO Box 1073, Buddina QLD 4575 Ph: (07) 5437 8555  
mail@dsqsurvey.com ABN: 91 615 043 251  
www.dsqsurvey.com ACN: 615 043 251  
WESTERN DOWNS

Signed JB  
Cadastral Surveyor/Director  
Date 28/06/2018

Map Ref.: 9544-34124	
Horiz. Datum MGA Z56	Vert. Datum AHD
Origin SP246943	Origin PSM 93860
	RL 80.365 AHD
Locality: LITTLE MOUNTAIN	
Local Government: SUNSHINE COAST REGIONAL COUNCIL	

SHEET 1 OF 1  
COMPUTER FILE 11692-S3 DIS  
DRAWING NUMBER 11692 S3 D-53  
Scale At A3 size  
REV. A

2018/07/16 W:\DSQ\_Data\Jobs\Current\11692 Concept Engineering\Data Survey\Drafting\Disclosure\11692-S3 DIS.dwg