

**MON TERRE
RIDGE ESTATE
STAGE 3**

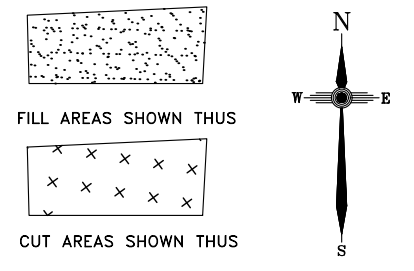
**Disclosure Plan
MON TERRE RIDGE
ESTATE
LITTLE MOUNTAIN
Bayonne Close, Little Mountain
PROPOSED LOT 55**

**DISCLOSURE PLAN
FOR PROPOSED ALLOTMENT 55
Dated 27th June 2018**

This plan shows details of proposed allotment 55 on the Plan of Development 07019 DA-01 dated 25 February 2010 which complies with a Subdivision Application approved by Sunshine Coast Regional Council, subject to conditions.

The area being proposed allotment 55 described as part of Lot 611 on SP290326, and situated at Bayonne Close, Little Mountain. The allotment is located from the south eastern most point of Lot 900 on SP290326 to proposed allotment 55 with a cadastral connection (A-B) as shown, containing an area of 1443 square metres, more or less.

ALL FILL WITHIN ALLOTMENTS IS TO LEVEL 1 INSPECTION AND TESTING IN ACCORDANCE WITH AS3798-2007



-8.5 FINAL SURFACE CONTOURS at 0.25m INTERVALS.

2.0 CUT HEIGHT **1.0** FILL HEIGHT

Note
Contour interval is shown at 0.5 metres.

Revisions	Surveyed	Drawn	Checked	Passed	Date	
A	ORIGINAL PLAN	DSQ	JJ	AJP	AJP	26.06.18

DSQ
LAND SURVEYORS

SUNSHINE COAST
PO Box 1073, Buddina QLD 4575 Ph: (07) 5437 8555
mail@dsqsurvey.com ABN: 91 615 043 251
www.dsqsurvey.com ACN: 615 043 251
WESTERN DOWNS

Signed JB
Cadastral Surveyor/Director
Date 28/06/2018

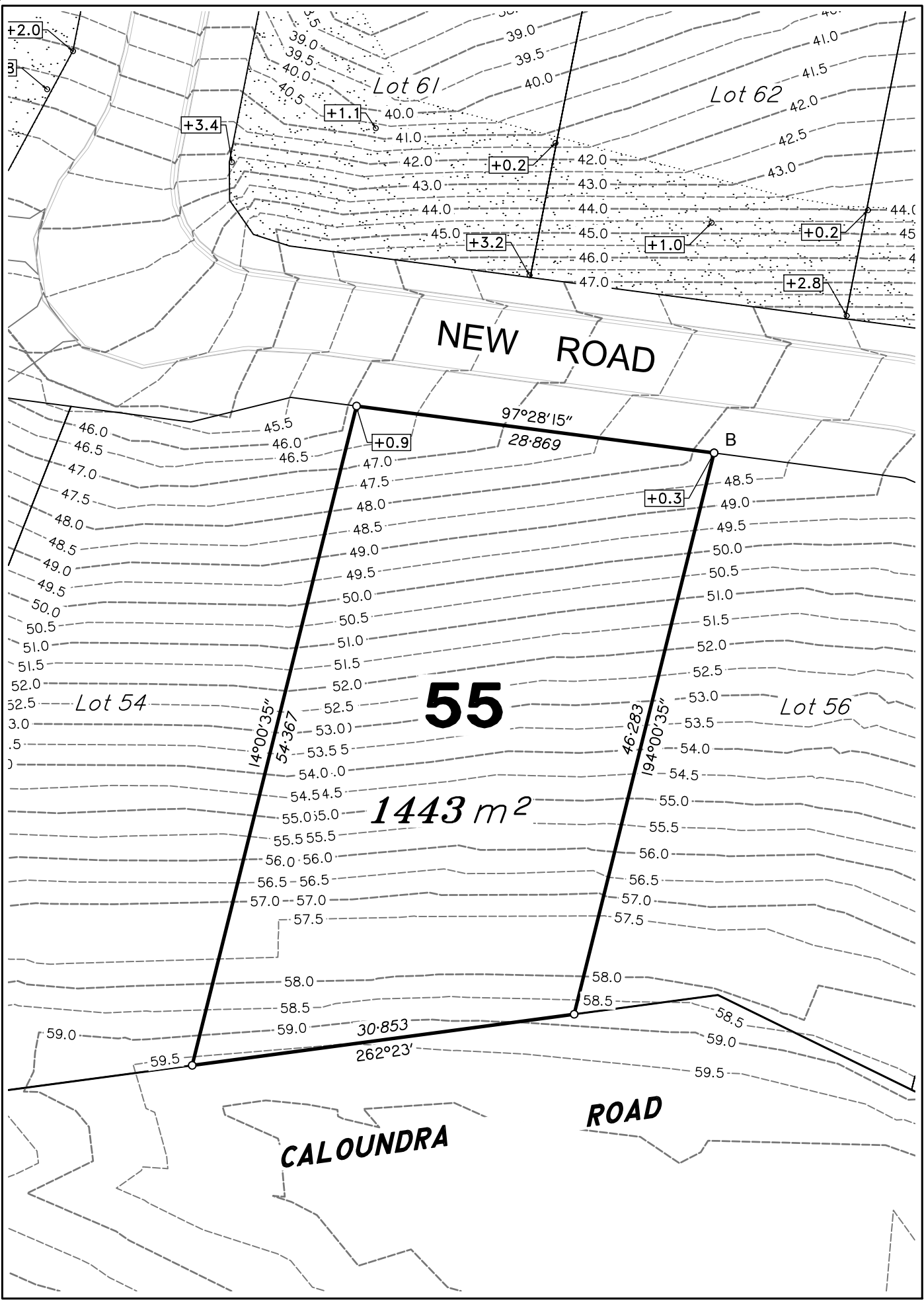
Map Ref.: 9544-34124

Horiz. Datum	MGA Z56	Vert. Datum	AHD
Origin	SP246943	Origin	PSM 93860
		RL	80.365 AHD

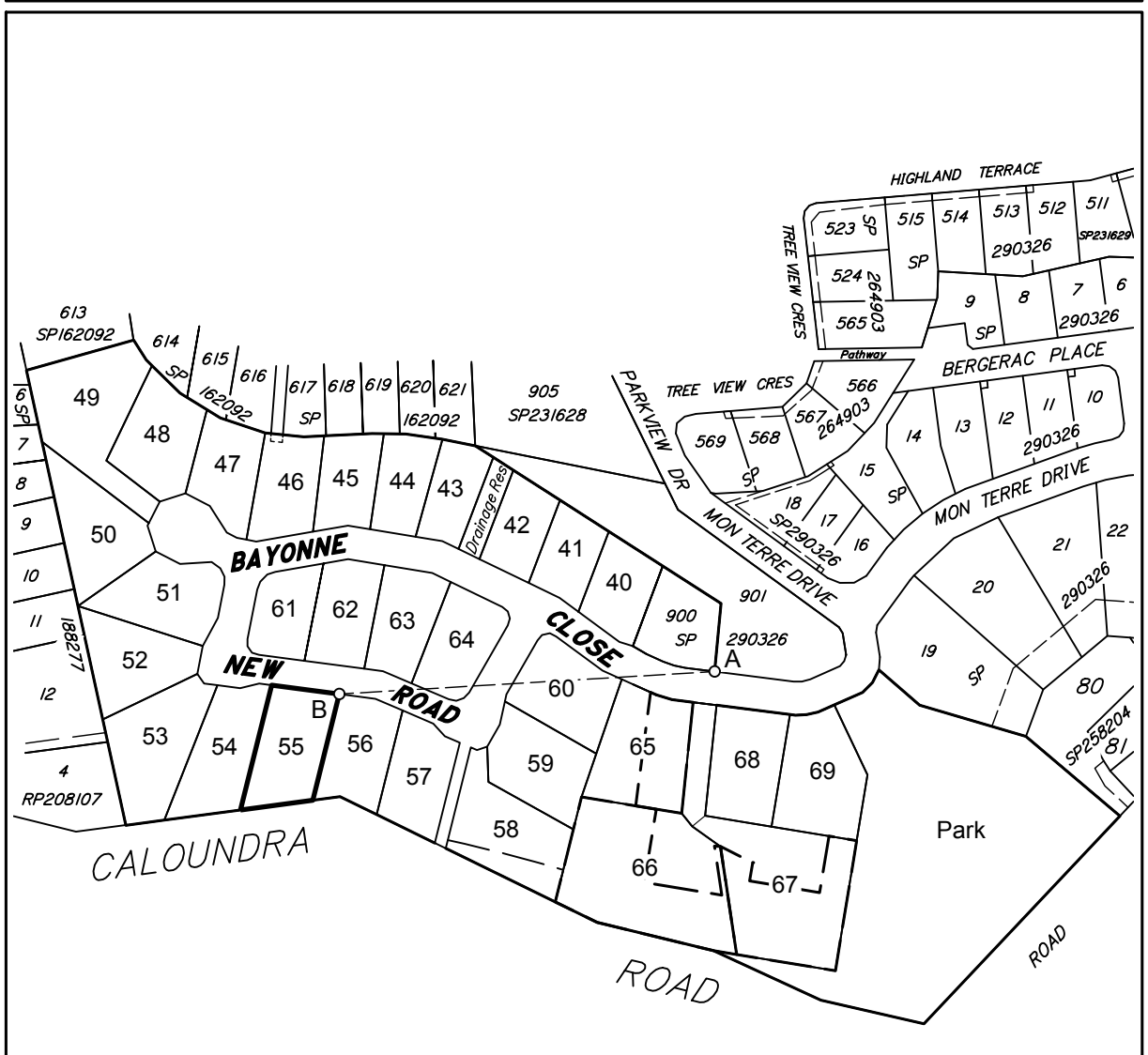
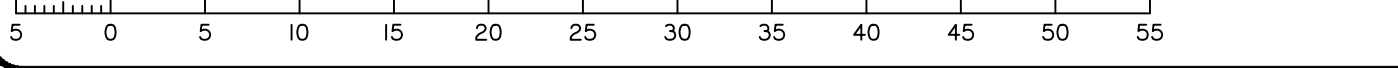
Locality: LITTLE MOUNTAIN
Local Government: SUNSHINE COAST REGIONAL COUNCIL

SHEET 1 OF 1 Scale **At A3 size**

COMPUTER FILE 11692-S3 DIS
DRAWING NUMBER **11692 S3 D-55** REV. **A**



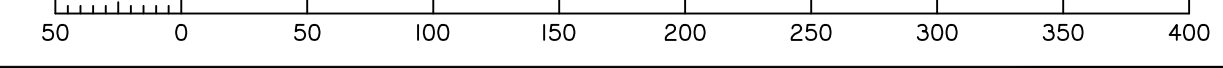
Scale 1:400 - Lengths are in Metres.



DETAIL SURVEY COMPLETED 13/12/2010.

Cadastral Connection
A-B 266°34'30" 158.95

Scale 1:3000 - Lengths are in Metres.



2018/107/16 W:\DSQ_Data\Jobs\Current\11692 Concept Engineering\Drafting\Disclosure\11692-S3 DIS.dwg