

**MON TERRE  
RIDGE ESTATE  
STAGE 3**

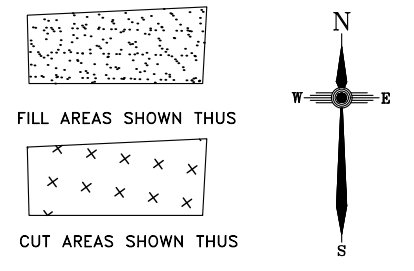
**Disclosure Plan  
MON TERRE RIDGE  
ESTATE  
LITTLE MOUNTAIN  
Bayonne Close, Little Mountain  
PROPOSED LOT 64**

**DISCLOSURE PLAN  
FOR PROPOSED ALLOTMENT 64  
Dated 27th June 2018**

This plan shows details of proposed allotment 64 on the Plan of Development 07019 DA-01 dated 25 February 2010 which complies with a Subdivision Application approved by Sunshine Coast Regional Council, subject to conditions.

The area being proposed allotment 64 described as part of Lot 611 on SP290326, and situated at Bayonne Close, Little Mountain. The allotment is located from the south eastern most point of Lot 900 on SP290326 to proposed allotment 64 with a cadastral connection (A-B) as shown, containing an area of 1191 square metres, more or less.

ALL FILL WITHIN ALLOTMENTS IS TO LEVEL 1 INSPECTION AND TESTING IN ACCORDANCE WITH AS3798-2007



-8.5 FINAL SURFACE CONTOURS at 0.25m INTERVALS.

**2.0** CUT HEIGHT **1.0** FILL HEIGHT

**Note**  
Contour interval is shown at 0.5 metres.

Revisions	Surveyed	Drawn	Checked	Passed	Date	
A	ORIGINAL PLAN	DSQ	JJ	AJP	AJP	26.06.18

**DSQ**  
LAND SURVEYORS

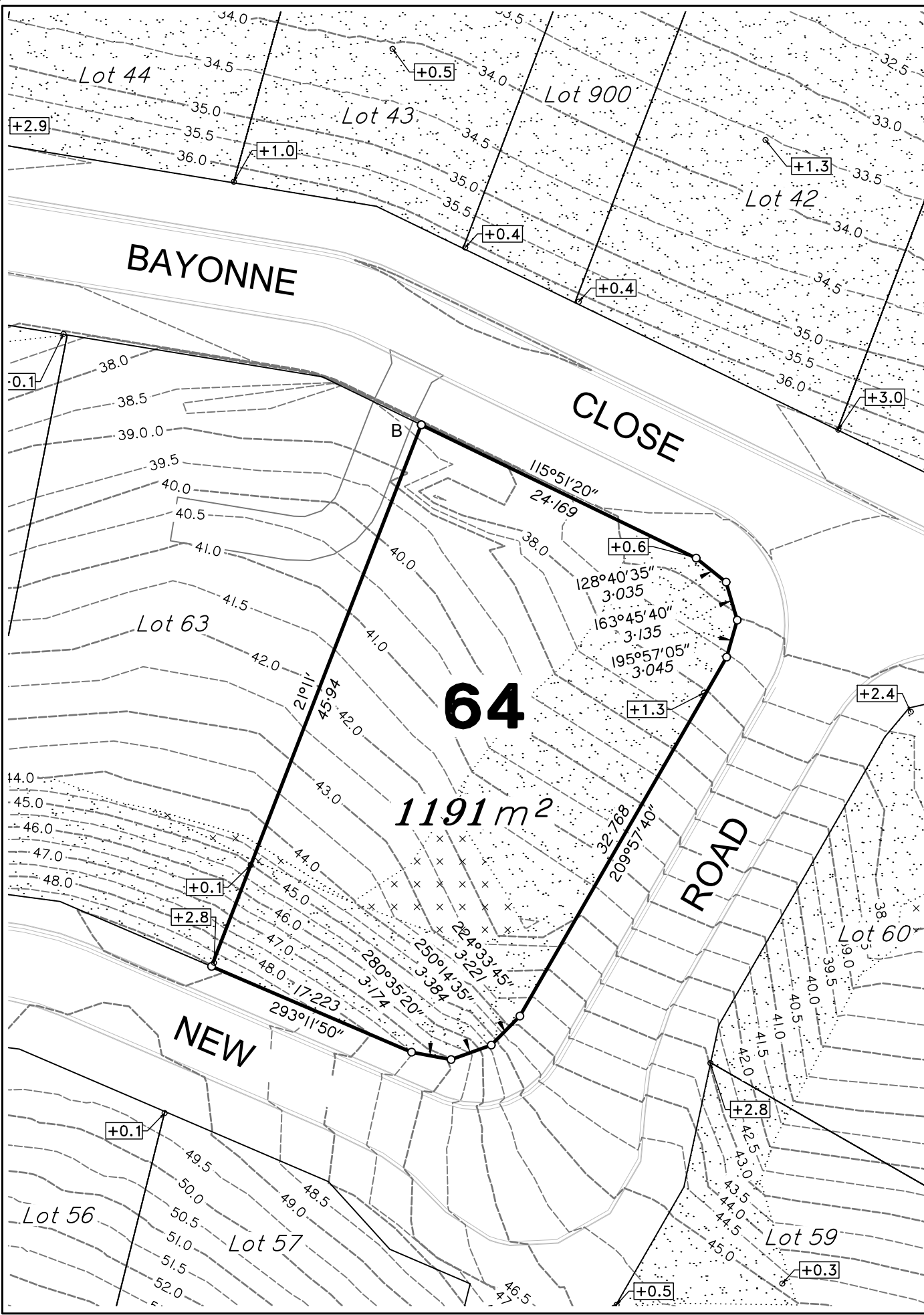
SUNSHINE COAST  
PO Box 1073, Buddina QLD 4575 Ph: (07) 5437 8555  
mail@dsqsurvey.com ABN: 91 615 043 251  
www.dsqsurvey.com ACN: 615 043 251  
WESTERN DOWNS

Signed JB  
Cadastral Surveyor/Director

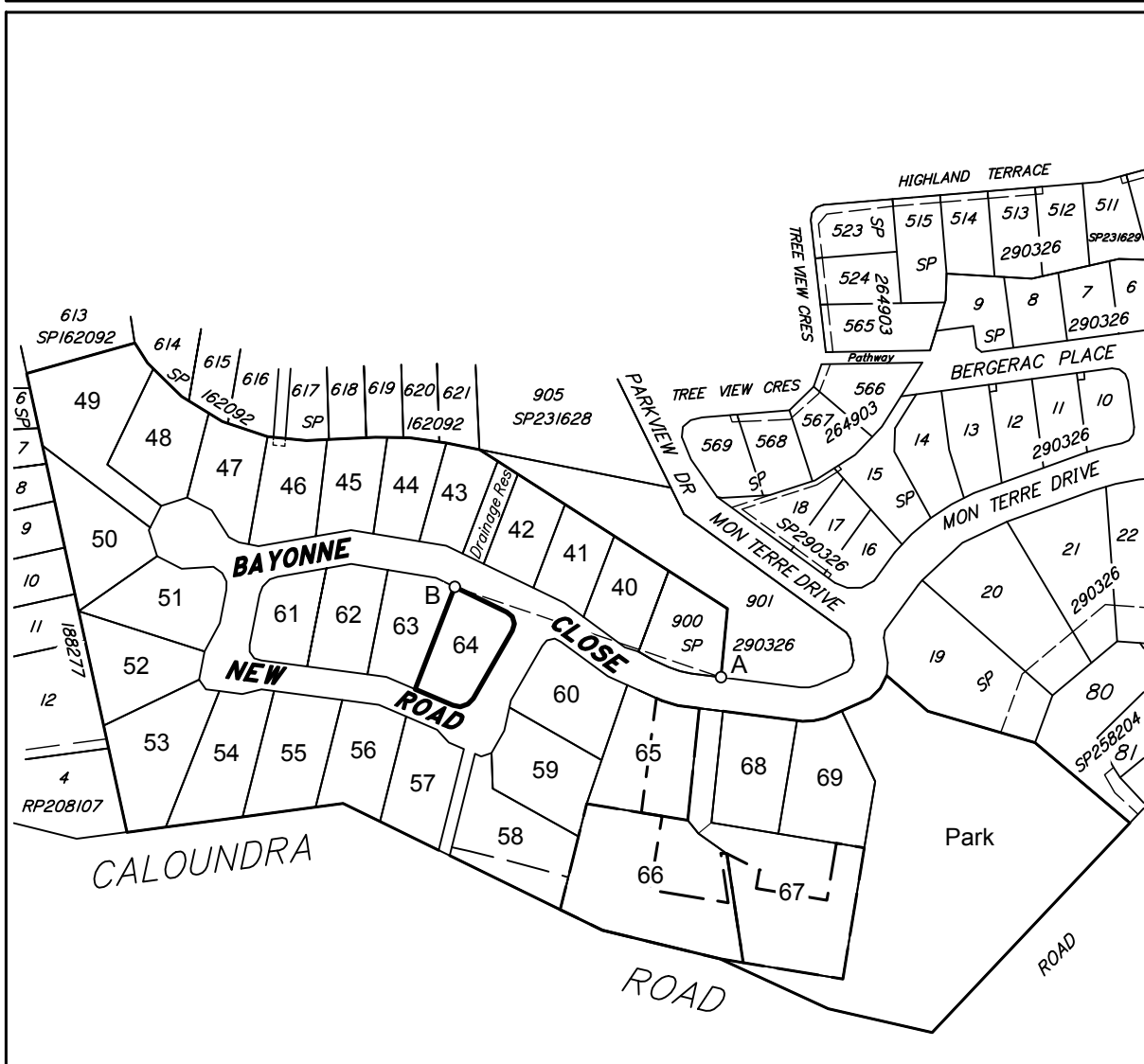
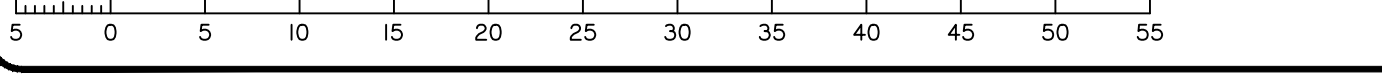
Date 28/06/2018

Map Ref.: 9544-34124

Horiz. Datum	MGA Z56	Vert. Datum	AHD
Origin	SP246943	Origin RL	PSM 93860 80.365 AHD
Locality: LITTLE MOUNTAIN			
Local Government: SUNSHINE COAST REGIONAL COUNCIL			
SHEET	1 OF 1	Scale	At A3 size
COMPUTER FILE	11692-S3 DIS		
DRAWING NUMBER	11692 S3 D-64		REV. A



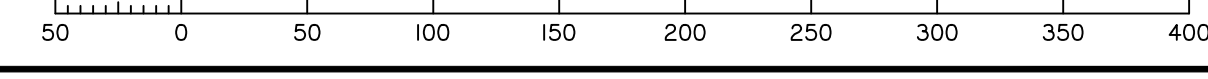
Scale 1:400 - Lengths are in Metres.



DETAIL SURVEY COMPLETED 13/12/2010.

Cadastral Connection  
A-B 288°45' 117.83

Scale 1:3000 - Lengths are in Metres.



2018/07/16 W:\DSQ\_Data\Jobs\Current\11692 Concept Engineering\Data Survey\Drafting\Disclosure\11692-S3 DIS.dwg