

**MON TERRE  
RIDGE ESTATE  
STAGE 3**

**Disclosure Plan**

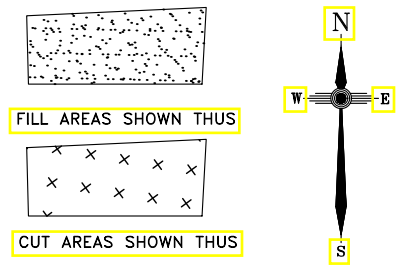
**MON TERRE RIDGE  
ESTATE**

**LITTLE MOUNTAIN**

Bayonne Close, Little Mountain

**PROPOSED LOT 66**

ALL FILL WITHIN ALLOTMENTS IS TO  
LEVEL 1 INSPECTION AND TESTING IN  
ACCORDANCE WITH AS3798-2007



8.5 FINAL SURFACE CONTOURS  
at 0.25m INTERVALS.

2.0 CUT HEIGHT 2.0 FILL HEIGHT

**Note**  
Contour interval is shown at  
0.5 metres.

Revisions	Surveyed	Drawn	Checked	Passed	Date
B LOTS 40-49,66,67	DSQ	JJ	AJP	AJP	30.07.18
A ORIGINAL PLAN	DSQ	JJ	AJP	AJP	26.06.18

**SUNSHINE COAST**  
PO Box 1073, Buddina QLD 4575 Ph: (07) 5437 8555  
mail@dsqsurvey.com ABN: 91 615 043 251  
www.dsqsurvey.com ACN: 615 043 251  
WESTERN DOWNS

Signed *JB*  
Cadastral Surveyor/Director  
Date 28/06/2018

Map Ref.: 9544-34124

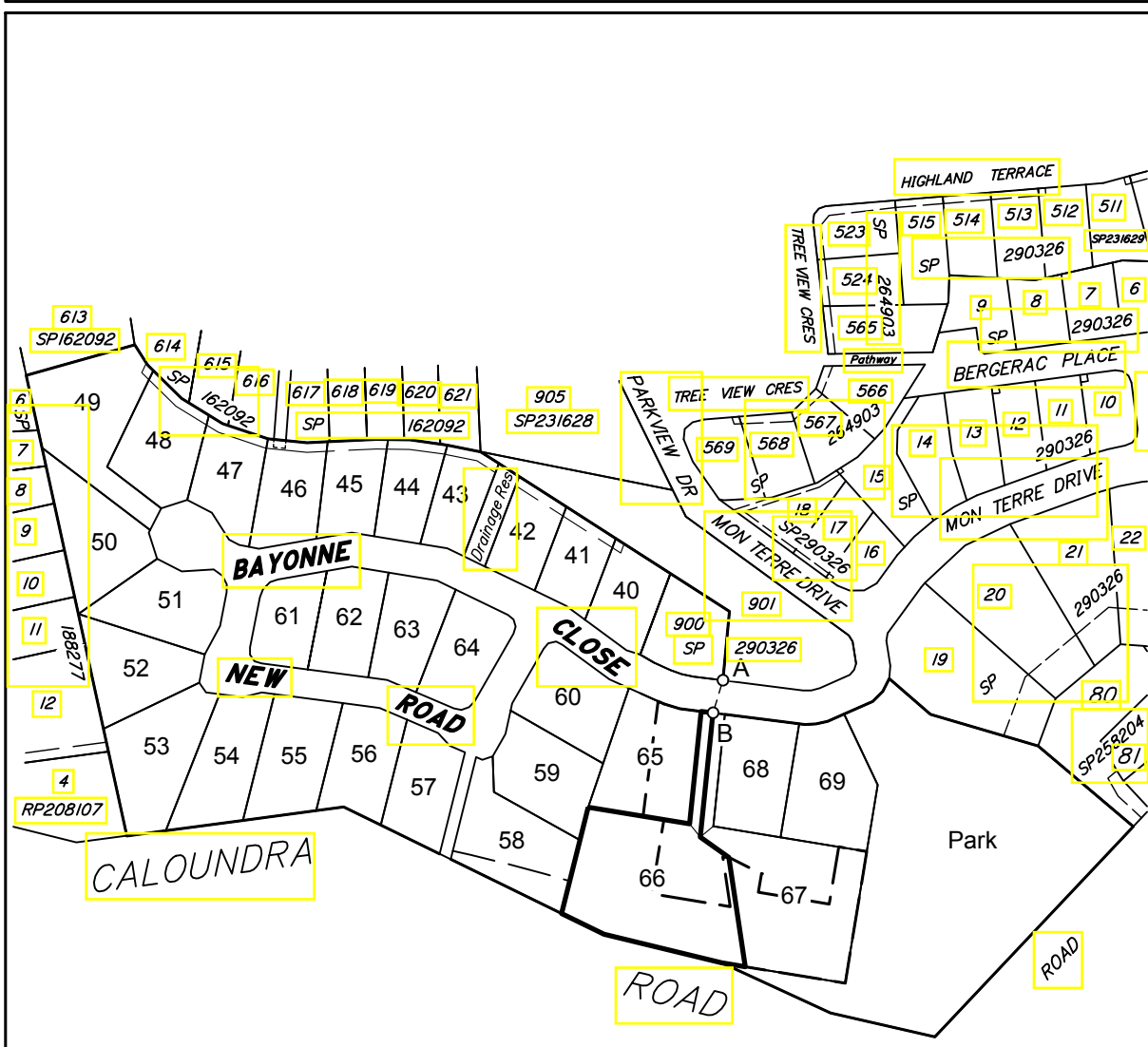
Horiz. Datum	MGA Z56	Vert. Datum	AHD
Origin	SP246943	Origin RL	PSM 93860 60.365 AHD
Locality:	LITTLE MOUNTAIN		
Local Government:	SUNSHINE COAST REGIONAL COUNCIL		

SHEET 1 OF 1 Scale At A3 size  
COMPUTER FILE 11692-S3 DIS Rev B  
DRAWING NUMBER 11692 S3 D-66 REV. B

**DISCLOSURE PLAN  
FOR PROPOSED ALLOTMENT 66**  
Dated 27th June 2018

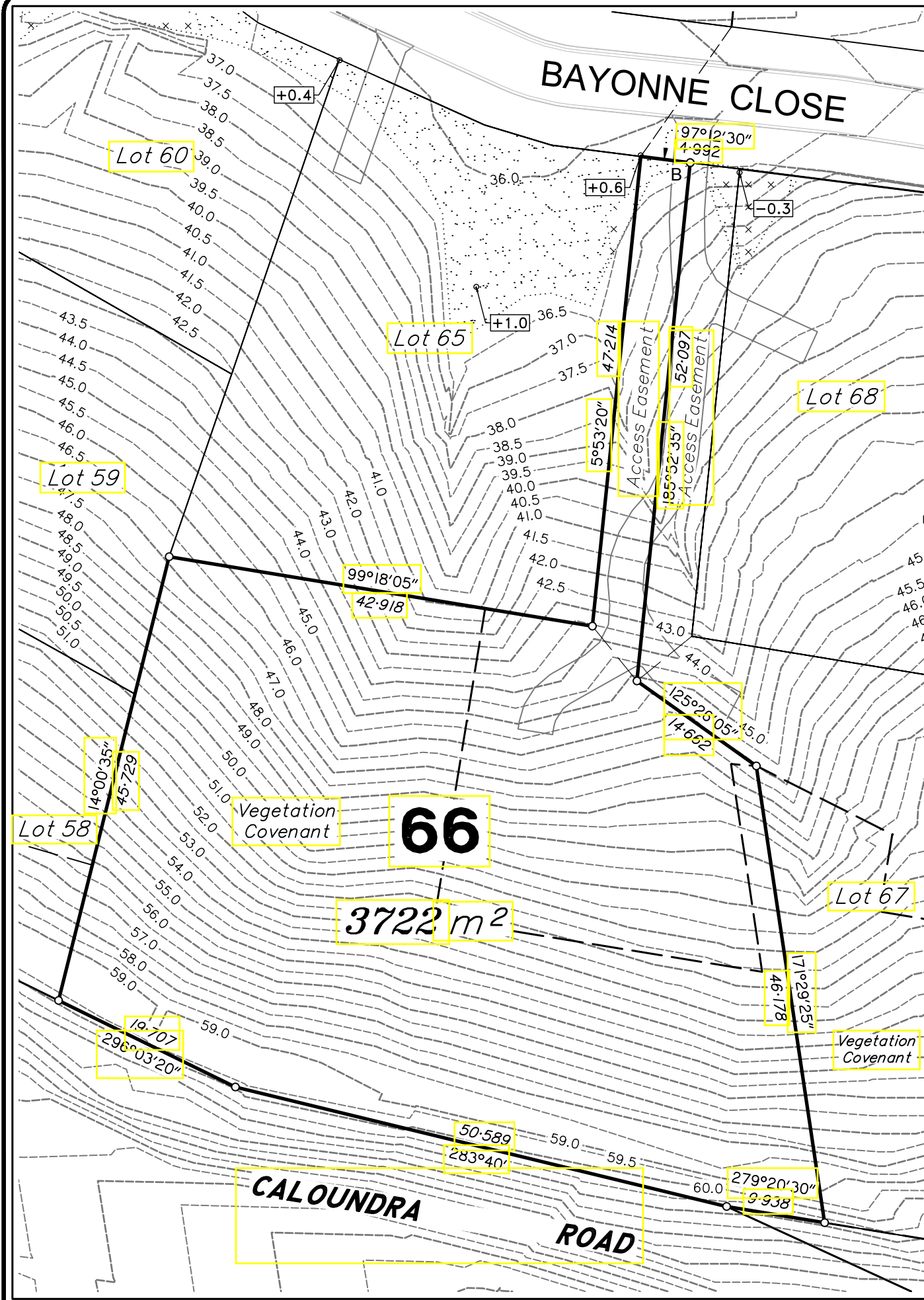
This plan shows details of proposed allotment 66 on the Plan of Development 07019 DA-01 dated 25 February 2010 which complies with a Subdivision Application approved by Sunshine Coast Regional Council, subject to conditions.

The area being proposed allotment 66 described as part of Lot 611 on SP290326, and situated at Bayonne Close, Little Mountain. The allotment is located from the south eastern most point of Lot 900 on SP290326 to proposed allotment 66 with a cadastral connection (A-B) as shown, containing an area of 3722 square metres, more or less.

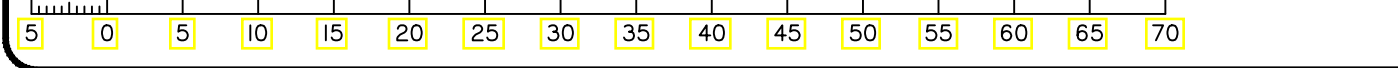


DETAIL SURVEY COMPLETED 13/12/2010.

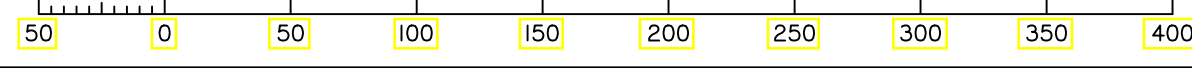
Cadastral Connection  
A-B 196°55'30" 14.205



Scale 1:500 - Lengths are in Metres.



Scale 1:3000 - Lengths are in Metres.



2018/107/30 W: DSQ\_Data\Jobs\Current\11692 Concept\Engineering\Data Survey\Drafting\Disclosure\11692-S3 DIS Rev B.dwg