

**MON TERRE
RIDGE ESTATE
STAGE 3**

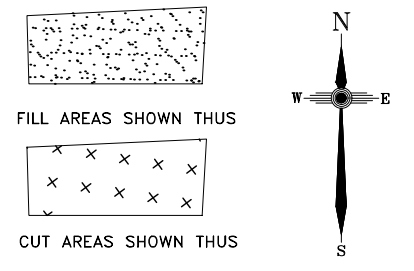
**Disclosure Plan
MON TERRE RIDGE
ESTATE
LITTLE MOUNTAIN
Bayonne Close, Little Mountain
PROPOSED LOT 52**

**DISCLOSURE PLAN
FOR PROPOSED ALLOTMENT 52
Dated 27th June 2018**

This plan shows details of proposed allotment 52 on the Plan of Development 07019 DA-01 dated 25 February 2010 which complies with a Subdivision Application approved by Sunshine Coast Regional Council, subject to conditions.

The area being proposed allotment 52 described as part of Lot 611 on SP290326, and situated at Bayonne Close, Little Mountain. The allotment is located from the south eastern most point of Lot 900 on SP290326 to proposed allotment 52 with a cadastral connection (A-B) as shown, containing an area of 1391 square metres, more or less.

ALL FILL WITHIN ALLOTMENTS IS TO LEVEL 1 INSPECTION AND TESTING IN ACCORDANCE WITH AS3798-2007



Note
Contour interval is shown at 0.5 metres.

Revisions	Surveyed	Drawn	Checked	Passed	Date	
C	ENGINEERING BASE	DSQ	JJ	AJP	AJP	08.01.19
B	LOTS 40-49,66,67	DSQ	JJ	AJP	AJP	30.07.18
A	ORIGINAL PLAN	DSQ	JJ	AJP	AJP	26.06.18

DSQ
LAND SURVEYORS

SUNSHINE COAST
PO Box 1073, Buddina QLD 4575 Ph: (07) 5437 8555
mail@dsqsurvey.com ABN: 91 615 043 251
www.dsqsurvey.com ACN: 615 043 251
WESTERN DOWNS

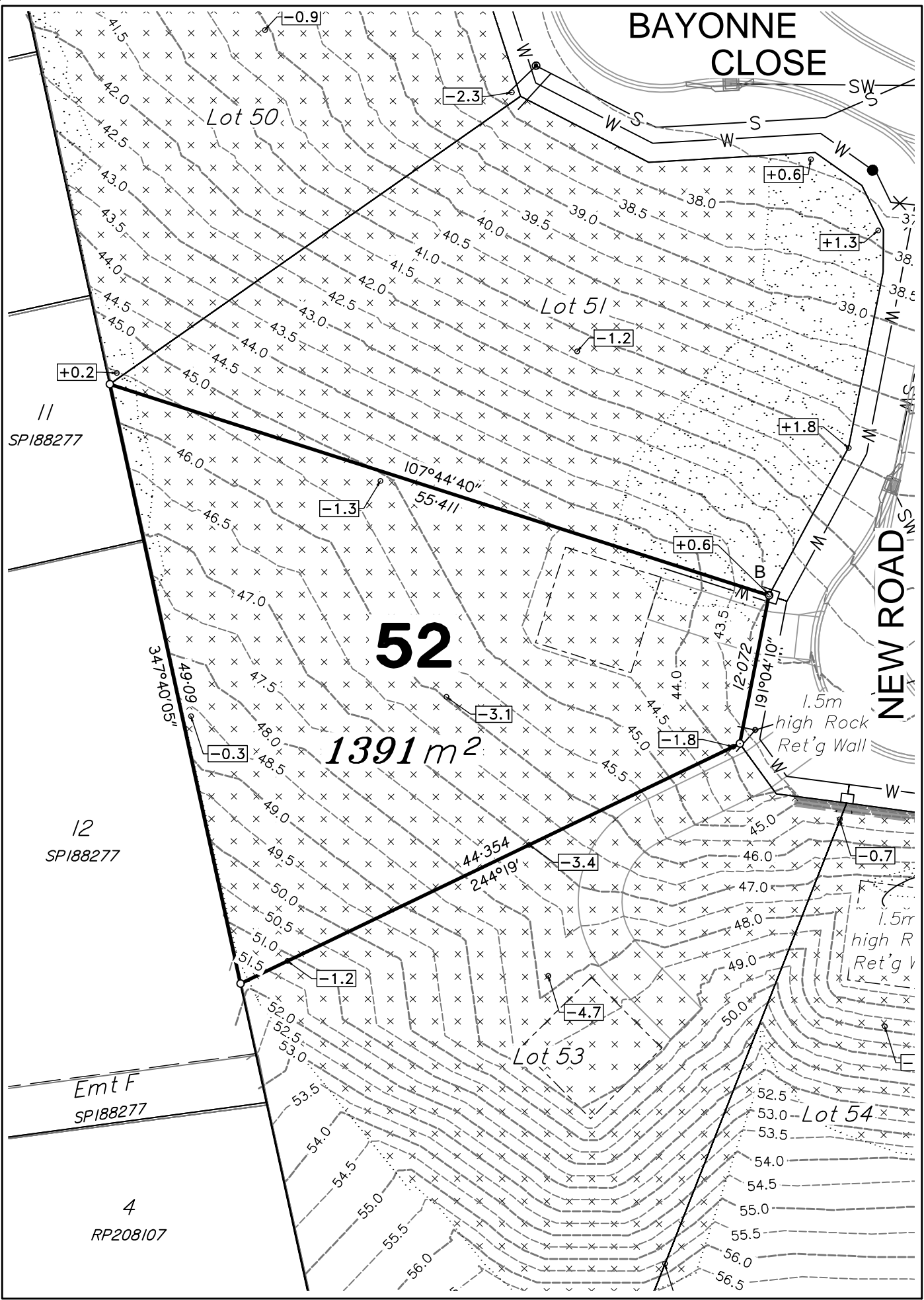
Signed JB
Cadastral Surveyor/Director
Date 28/06/2018

Map Ref.: 9544-34124

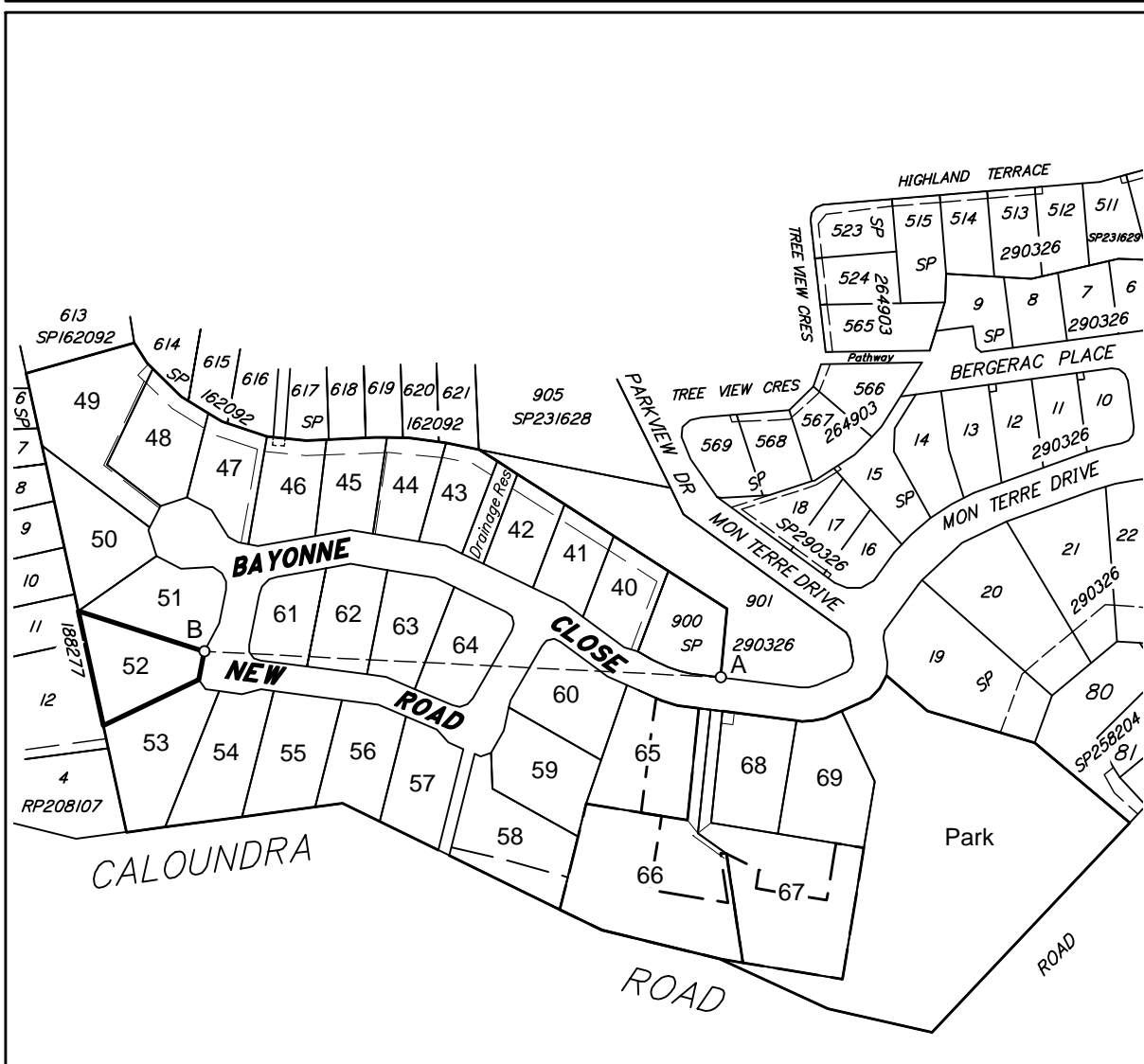
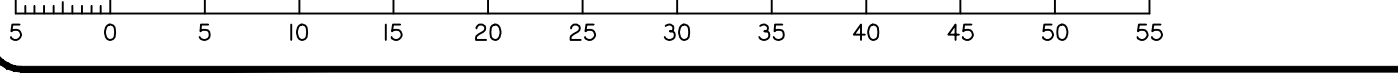
Horiz. Datum	MGA Z56	Vert. Datum	AHD
Origin	SP246943	Origin RL	PSM 93860 80.365 AHD

Locality: LITTLE MOUNTAIN
Local Government: SUNSHINE COAST REGIONAL COUNCIL

SHEET 1 OF 1 Scale At A3 size
COMPUTER FILE 11692-S3 DIS Rev C
DRAWING NUMBER **11692 S3 D-52** REV. **C**



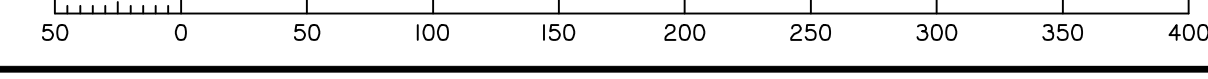
Scale 1:400 - Lengths are in Metres.



DETAIL SURVEY COMPLETED 13/12/2010.
ENGINEERING DESIGN BY COVEY ASSOCIATES
PTY LTD PLANS 172121-A DATED 18.12.2018

Cadastral Connection
A-B 272°52'20" 216.66

Scale 1:3000 - Lengths are in Metres.



2019/10/23 W:\DSQ_Data\Jobs\Current\11692 Concept Engineering\Data Survey\Drafting\Disclosure\11692-S3 DIS Rev C.dwg