

**MON TERRE  
RIDGE ESTATE  
STAGE 3**

**Disclosure Plan**

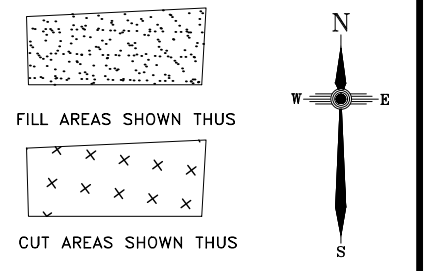
**MON TERRE RIDGE  
ESTATE**

**LITTLE MOUNTAIN**

**Bayonne Close, Little Mountain**

**PROPOSED LOT 53**

ALL FILL WITHIN ALLOTMENTS IS TO LEVEL 1 INSPECTION AND TESTING IN ACCORDANCE WITH AS3798-2007



Note  
Contour interval is shown at 0.5 metres.

Revisions	Surveyed	Drawn	Checked	Passed	Date
C ENGINEERING BASE	DSQ	JJ	AJP	AJP	08.01.19
B LOTS 40-49,66,67	DSQ	JJ	AJP	AJP	30.07.18
A ORIGINAL PLAN	DSQ	JJ	AJP	AJP	26.06.18

**DSQ**  
LAND SURVEYORS

SUNSHINE COAST  
PO Box 1073, Buddina QLD 4575 Ph: (07) 5437 8555  
mail@dsqsurvey.com ABN: 91 615 043 251  
www.dsqsurvey.com ACN: 615 043 251  
WESTERN DOWNS

Signed   
Cadastral Surveyor/Director  
Date 28/06/2018

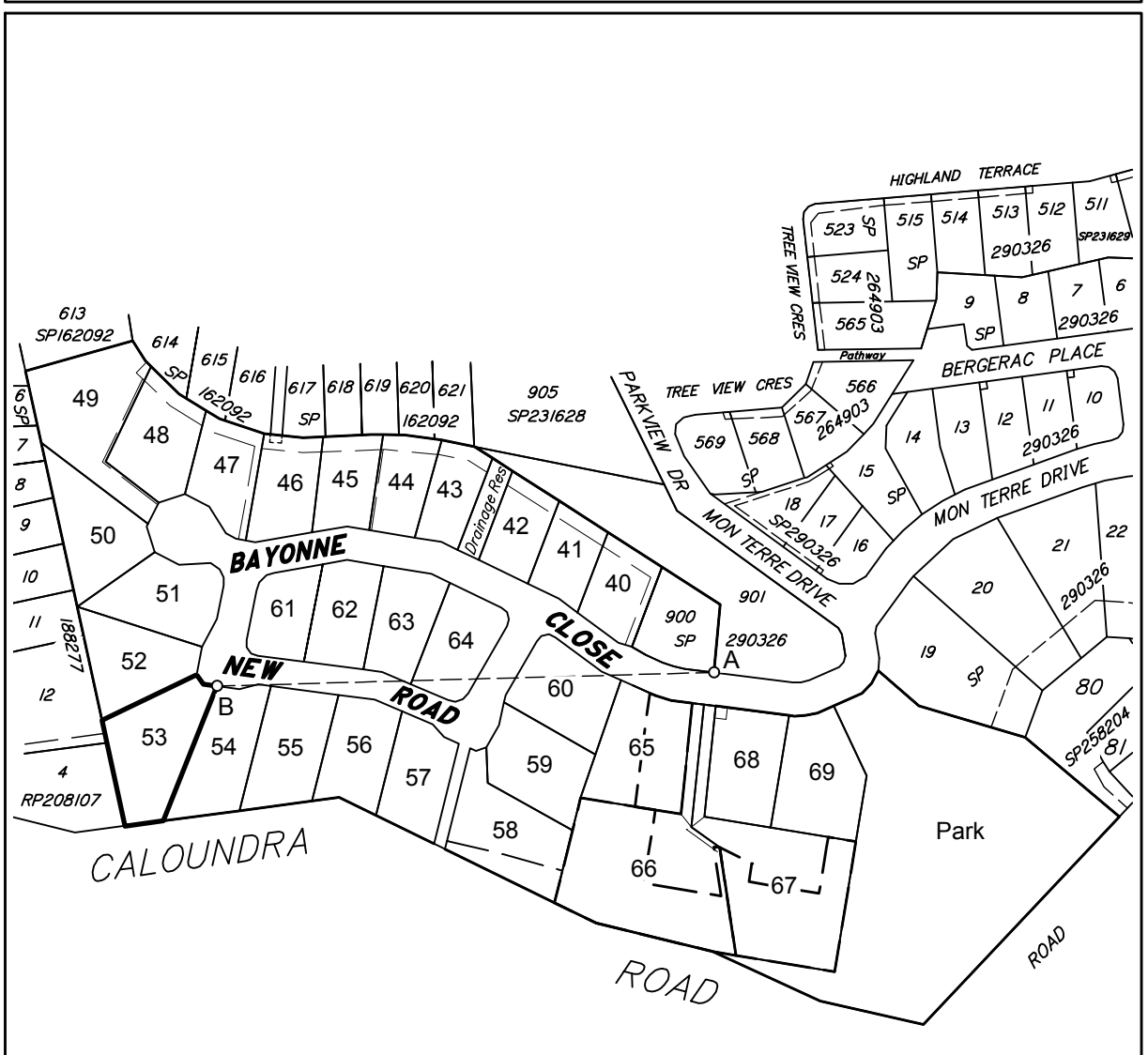
Map Ref.: 9544-34124  
Horiz. Datum MGA Z56 Vert. Datum AHD  
Origin SP246943 Origin PSM 93860  
RL 80.365 AHD  
Locality: LITTLE MOUNTAIN  
Local Government: SUNSHINE COAST REGIONAL COUNCIL

SHEET 1 OF 1 Scale At A3 size  
COMPUTER FILE 11692-S3 DIS Rev C  
DRAWING NUMBER 11692 S3 D-53 REV. C

**DISCLOSURE PLAN  
FOR PROPOSED ALLOTMENT 53**  
Dated 27th June 2018

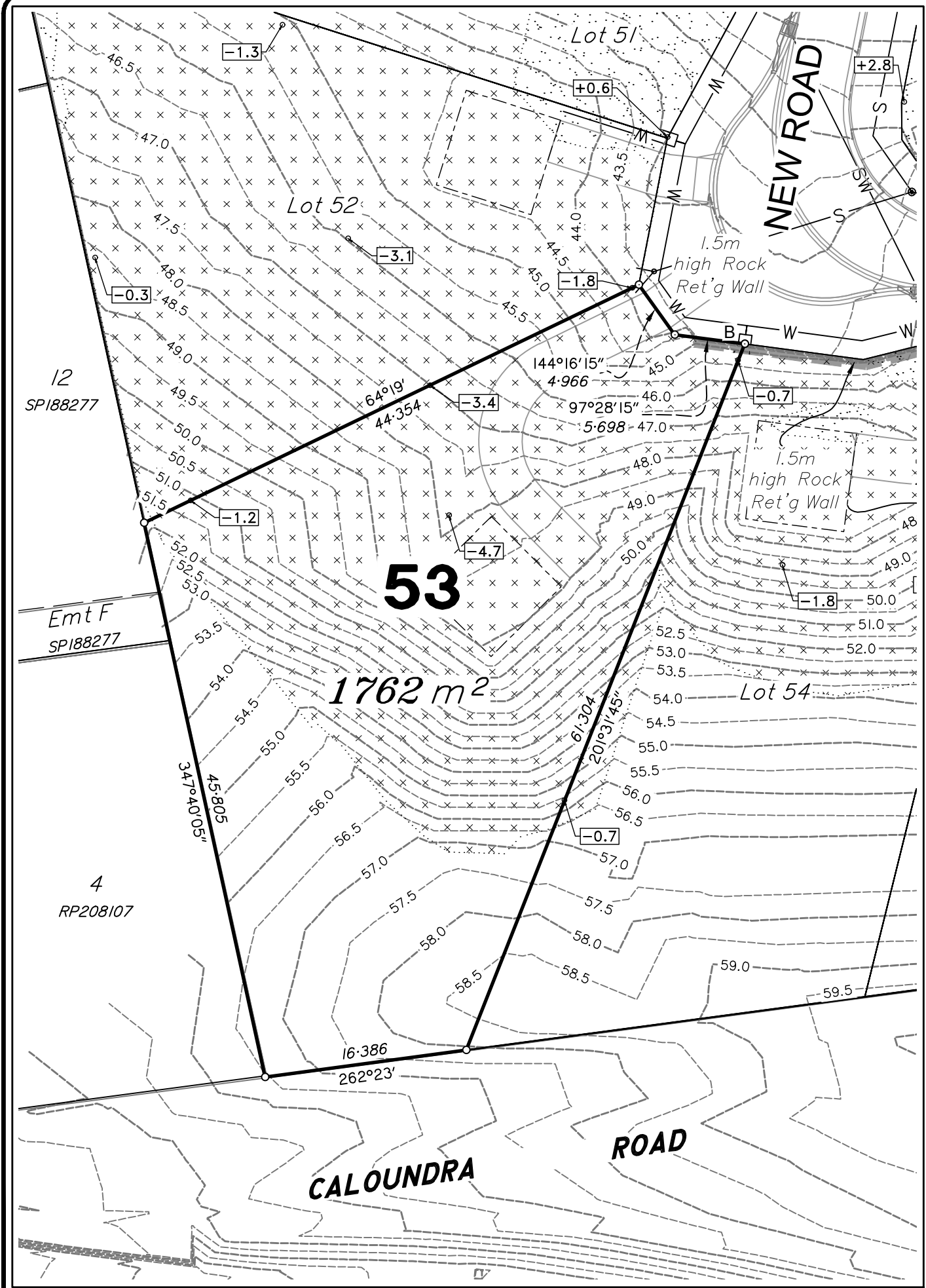
This plan shows details of proposed allotment 53 on the Plan of Development 07019 DA-01 dated 25 February 2010 which complies with a Subdivision Application approved by Sunshine Coast Regional Council, subject to conditions.

The area being proposed allotment 53 described as part of Lot 611 on SP290326, and situated at Bayonne Close, Little Mountain. The allotment is located from the south eastern most point of Lot 900 on SP290326 to proposed allotment 53 with a cadastral connection (A-B) as shown, containing an area of 1762 square metres, more or less.

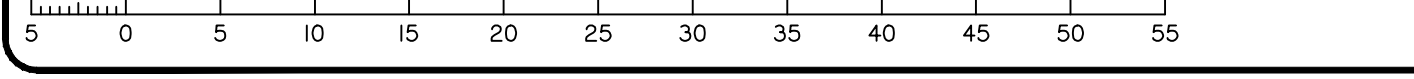


DETAIL SURVEY COMPLETED 13/12/2010.  
ENGINEERING DESIGN BY COVEY ASSOCIATES  
PTY LTD PLANS 172121-A DATED 18.12.2018

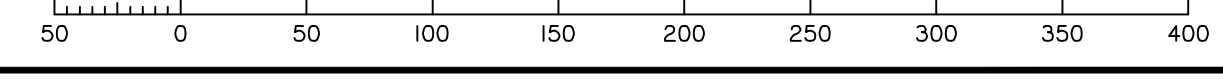
Cadastral Connection  
A-B 268°25'40" 210.235



Scale 1:400 - Lengths are in Metres.



Scale 1:3000 - Lengths are in Metres.



2019/10/23 W:\DSQ\_Data\Jobs\Current\11692 Concept\Engineering\Drawings\Disclosure\11692-S3 DIS Rev C.dwg