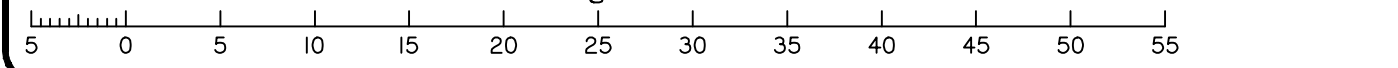


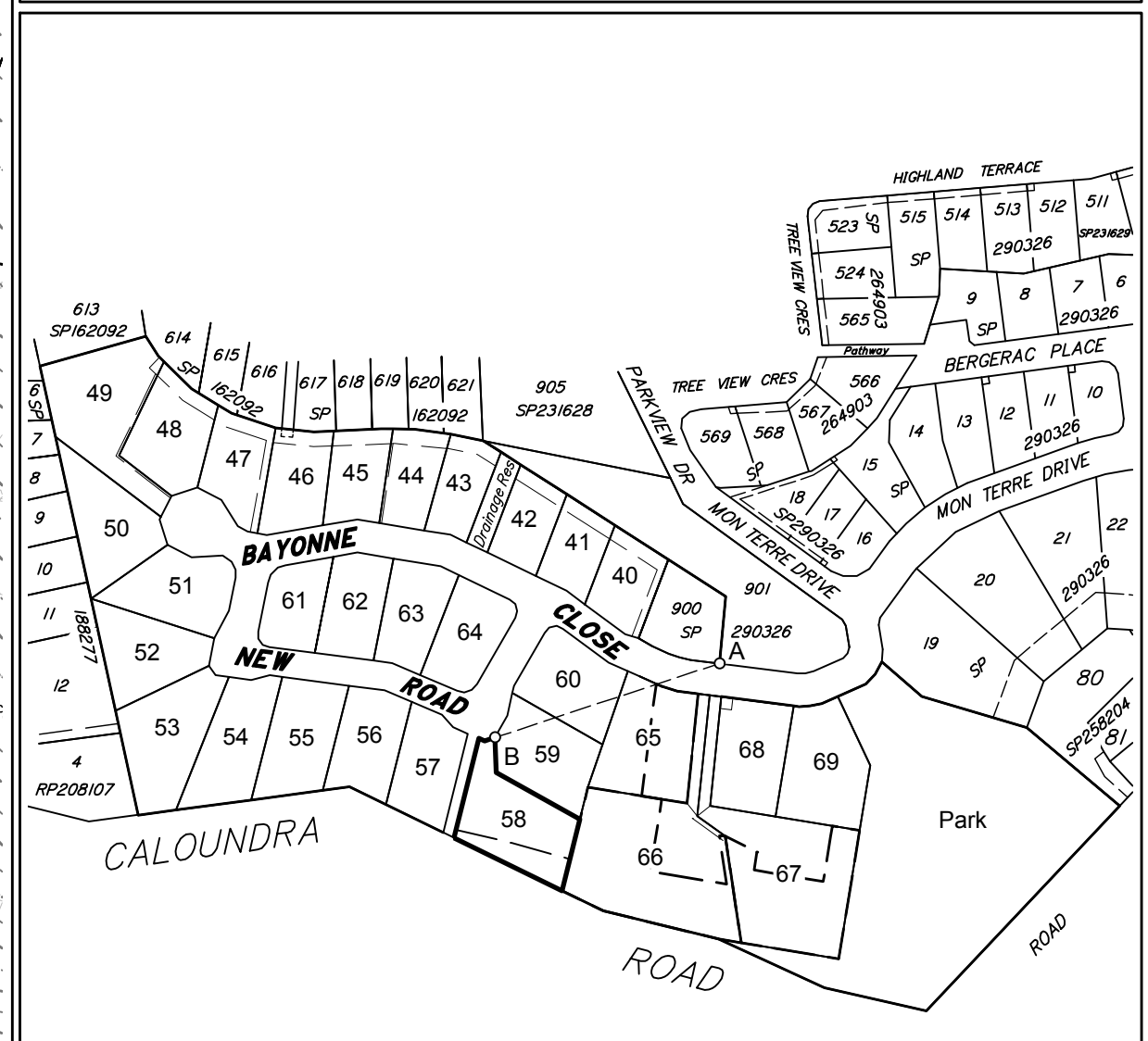
Scale 1:400 - Lengths are in Metres.



DISCLOSURE PLAN FOR PROPOSED ALLOTMENT 58 Dated 27th June 2018

This plan shows details of proposed allotment 58 on the Plan of Development 07019 DA-01 dated 25 February 2010 which complies with a Subdivision Application approved by Sunshine Coast Regional Council, subject to conditions.

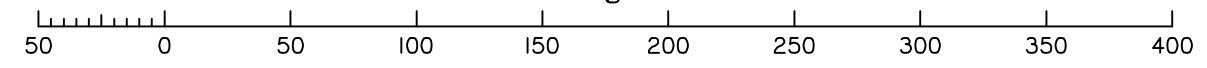
The area being proposed allotment 58 described as part of Lot 611 on SP290326, and situated at Bayonne Close, Little Mountain. The allotment is located from the south eastern most point of Lot 900 on SP290326 to proposed allotment 58 with a cadastral connection (A-B) as shown, containing an area of 1765 square metres, more or less.



DETAIL SURVEY COMPLETED 13/12/2010.
ENGINEERING DESIGN BY COVEY ASSOCIATES
PTY LTD PLANS 172121-A DATED 18.12.2018

Cadastral Connection
A-B 251°45' 101/255

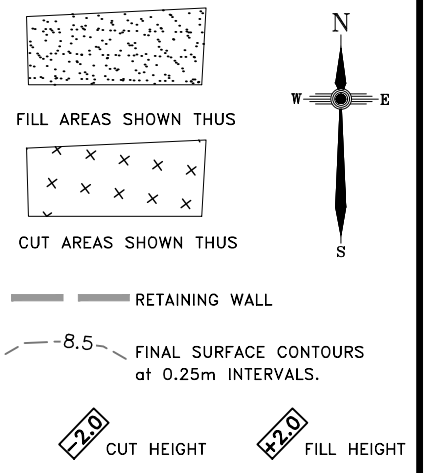
Scale 1:3000 - Lengths are in Metres.



MON TERRE RIDGE ESTATE STAGE 3

Disclosure Plan MON TERRE RIDGE ESTATE LITTLE MOUNTAIN Bayonne Close, Little Mountain PROPOSED LOT 58

ALL FILL WITHIN ALLOTMENTS IS TO LEVEL 1 INSPECTION AND TESTING IN ACCORDANCE WITH AS3798-2007



Note
Contour interval is shown at 0.5 metres.

Revisions	Surveyed	Drawn	Checked	Passed	Date
C ENGINEERING BASE	DSQ	JJ	AJP	AJP	08.01.19
B LOTS 40-49,66,67	DSQ	JJ	AJP	AJP	30.07.18
A ORIGINAL PLAN	DSQ	JJ	AJP	AJP	26.06.18

SUNSHINE COAST
PO Box 1073, Buddina QLD 4575 Ph: (07) 5437 8555
mail@dsqsurvey.com ABN: 91 615 043 251
www.dsqsurvey.com ACN: 615 043 251
WESTERN DOWNS

Signed
Cadastral Surveyor/Director
Date 28/06/2018

Map Ref.: 9544-34124
Horiz. Datum MGA Z56 Vert. Datum AHD
Origin SP246943 Origin PSM 93860
RL 80.365 AHD
Locality: LITTLE MOUNTAIN
Local Government: SUNSHINE COAST REGIONAL COUNCIL

SHEET 1 OF 1 Scale At A3 size
COMPUTER FILE 11692-S3 DIS Rev C
DRAWING NUMBER REV.
11692 S3 D-58 C

2019/10/23 W:\DSQ_Data\Jobs\Current\11692 Concept\Engineering\11692-S3 DIS Rev C.dwg