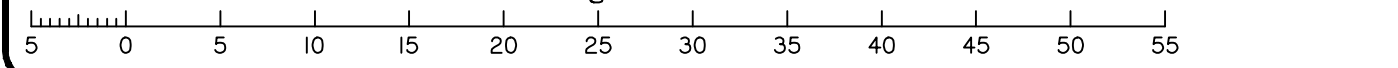


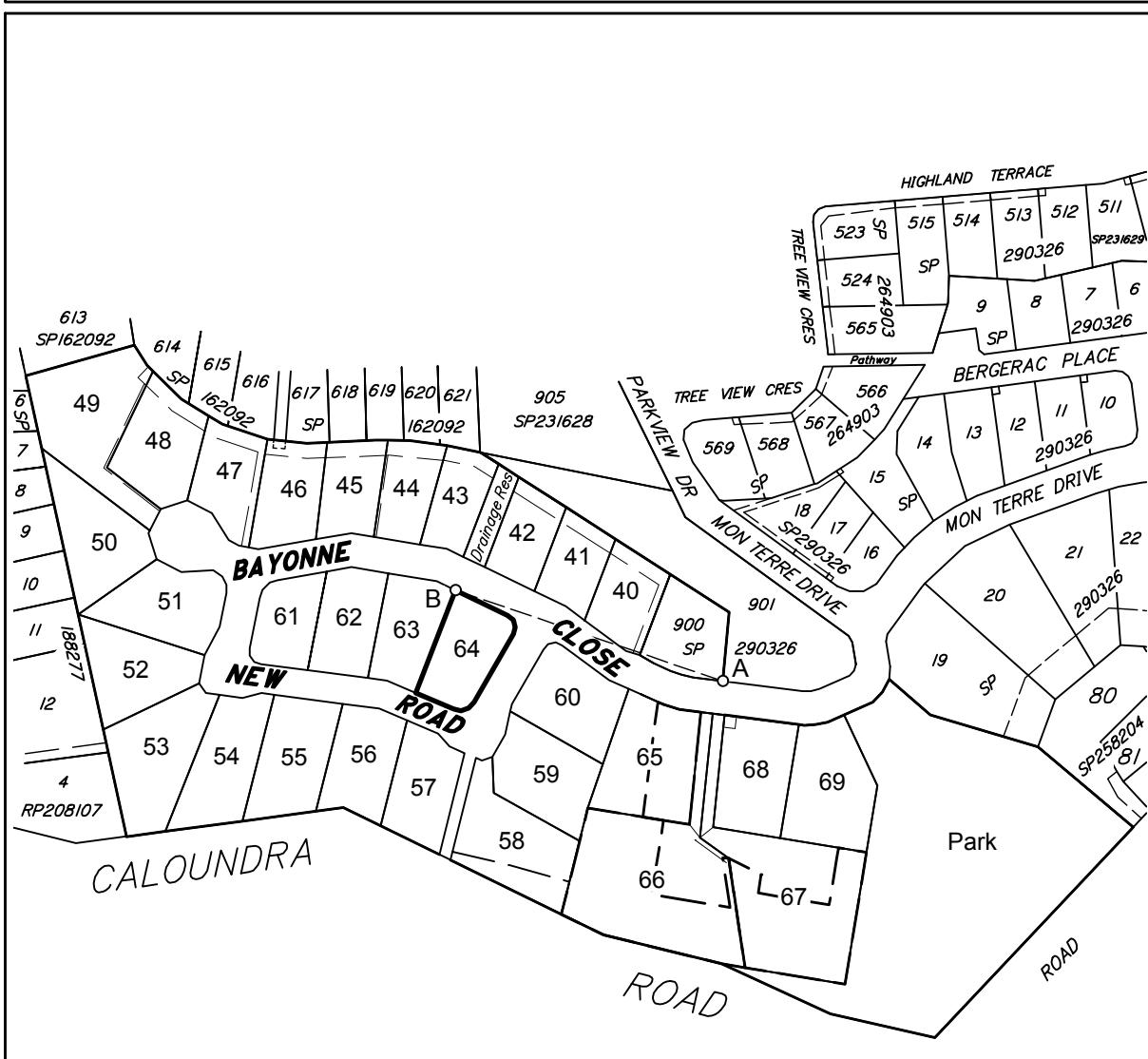
Scale 1:400 - Lengths are in Metres.



### DISCLOSURE PLAN FOR PROPOSED ALLOTMENT 64 Dated 27th June 2018

This plan shows details of proposed allotment 64 on the Plan of Development 07019 DA-01 dated 25 February 2010 which complies with a Subdivision Application approved by Sunshine Coast Regional Council, subject to conditions.

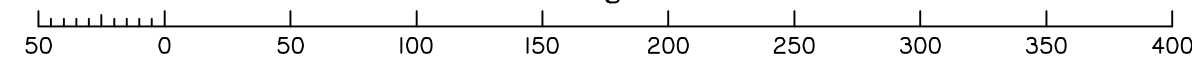
The area being proposed allotment 64 described as part of Lot 611 on SP290326, and situated at Bayonne Close, Little Mountain. The allotment is located from the south eastern most point of Lot 900 on SP290326 to proposed allotment 64 with a cadastral connection (A-B) as shown, containing an area of 1191 square metres, more or less.



DETAIL SURVEY COMPLETED 13/12/2010.  
ENGINEERING DESIGN BY COVEY ASSOCIATES  
PTY LTD PLANS 172121-A DATED 18.12.2018

Cadastral Connection  
A-B 288°45' 117.83

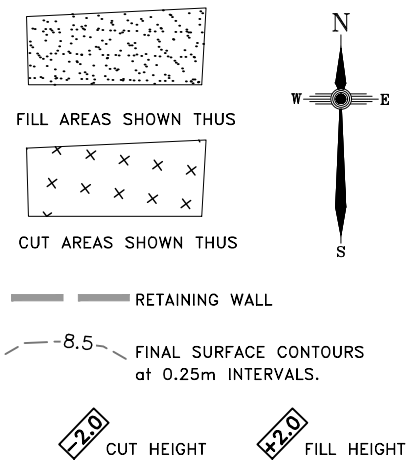
Scale 1:3000 - Lengths are in Metres.



### MON TERRE RIDGE ESTATE STAGE 3

### Disclosure Plan MON TERRE RIDGE ESTATE LITTLE MOUNTAIN Bayonne Close, Little Mountain PROPOSED LOT 64

ALL FILL WITHIN ALLOTMENTS IS TO LEVEL 1 INSPECTION AND TESTING IN ACCORDANCE WITH AS3798-2007



Note  
Contour interval is shown at 0.5 metres.

Revisions	Surveyed	Drawn	Checked	Passed	Date	
C	ENGINEERING BASE	DSQ	JJ	AJP	AJP	08.01.19
B	LOTS 40-49,66,67	DSQ	JJ	AJP	AJP	30.07.18
A	ORIGINAL PLAN	DSQ	JJ	AJP	AJP	26.06.18

SUNSHINE COAST  
PO Box 1073, Buddina QLD 4575 Ph: (07) 5437 8555  
mail@dsqsurvey.com ABN: 91 615 043 251  
www.dsqsurvey.com ACN: 615 043 251  
WESTERN DOWNS

Signed JB  
Cadastral Surveyor/Director  
Date 28/06/2018

Map Ref.: 9544-34124  
Horiz. Datum MGA Z56 Vert. Datum AHD  
Origin SP246943 Origin PSM 93860  
RL 80.365 AHD  
Locality: LITTLE MOUNTAIN  
Local Government: SUNSHINE COAST REGIONAL COUNCIL

SHEET 1 OF 1 Scale At A3 size  
COMPUTER FILE 11692-S3 DIS Rev C  
DRAWING NUMBER REV.  
**11692 S3 D-64 C**

2019/01/23 W:\DSQ\_Data\Jobs\Jobs Current\11692 Concept\Engineering\Data Survey\Drafting\Disclosure\11692-S3 DIS Rev C.dwg