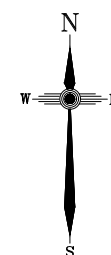
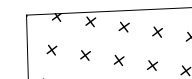


PROPOSED LOT 65

ALL FILL WITHIN ALLOTMENTS IS TO
LEVEL 1 INSPECTION AND TESTING IN
ACCORDANCE WITH AS3798-2007



FILL AREAS SHOWN THUS



CUT AREAS SHOWN THUS

 RETAINING WALL
 SLOPE

—8.5— FINAL SURFACE CONTOURS
at 0.25m INTERVALS.

2.0 CUT HEIGHT

+2.0 FILL HEIGHT

Note

Note
Contour interval is shown at
0.5 metres.

	Revisions	Surveyed	Drawn	Checked	Passed	Date
C	ENGINEERING BASE	DSQ	JJ	AJP	AJP	08.01.1
B	LOTS 40-49,66,67	DSQ	JJ	AJP	AJP	30.07.1
A	ORIGINAL PLAN	DSQ	JJ	AJP	AJP	26.06.1



SUNSHINE COAST
PO Box 1073, Buddina QLD 4575 Ph: (07) 5437 8555
mail@dsqsurvey.com ABN: 91 615 043 251
www.dsqsurvey.com ACN: 615 043 251

Signed JB
Cadastral Surveyor/Director

Date 28/06/2018

Map Ref.: 9544-34124

Horiz. Datum MGA 756

Vert. Datum	AHD
-------------	-----

Origin SP246943

Origin	PSM 9386
RL	80.365 AH

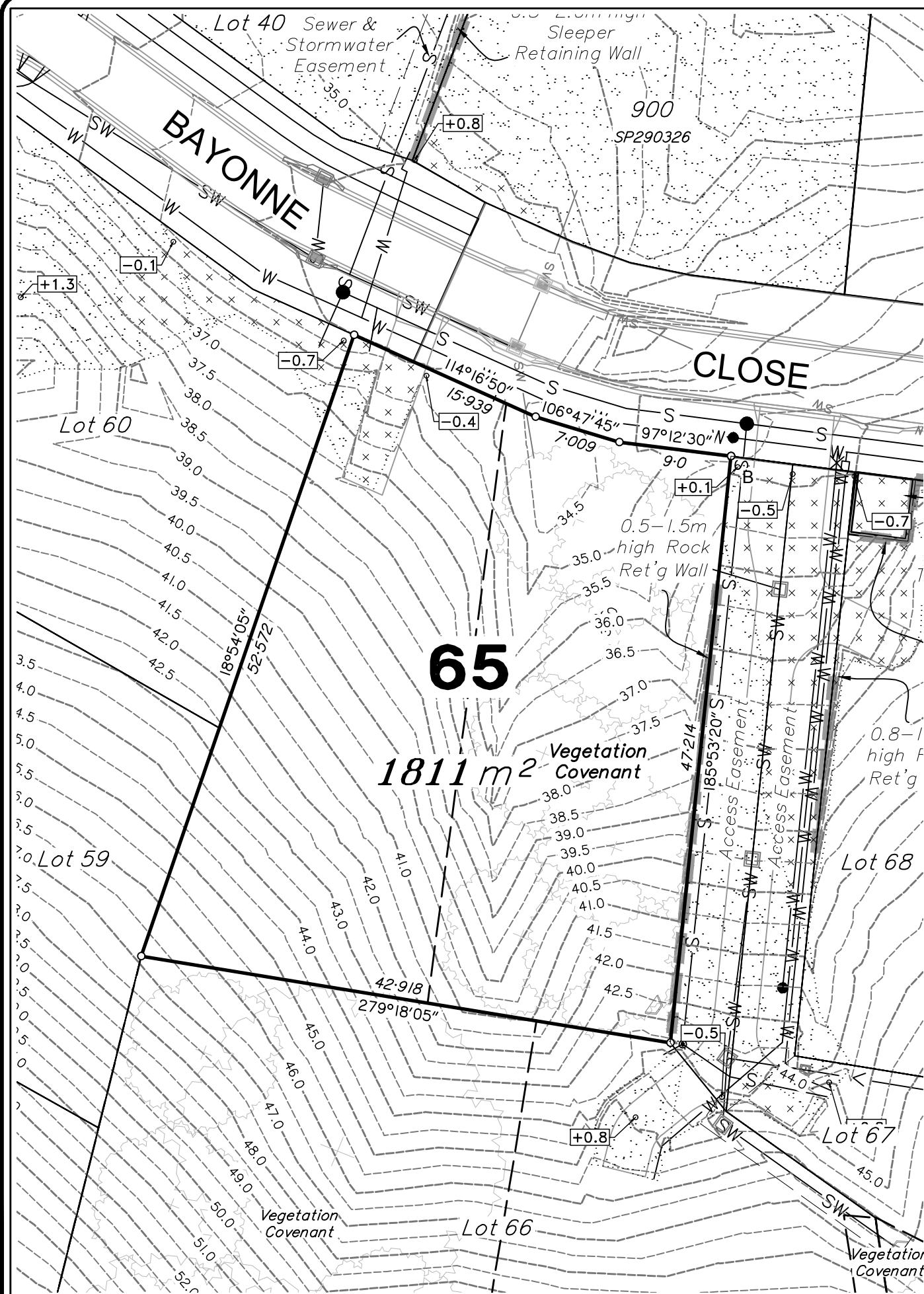
Locality: LITTLE MOUNTAIN

Local Government: SUNSHINE COAST
REGIONAL COUNCIL

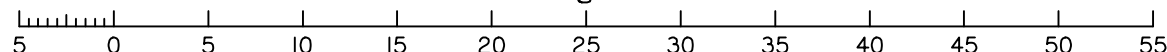
SHEET 1 OF 1	Scale At A3 size
--------------	-------------------------

COMPUTER FILE	11692-S3 DIS Rev C
---------------	--------------------

DRAWING NUMBER	REV.
11692 S3 D-65	C



Scale 1:400 - Lengths are in Metres.

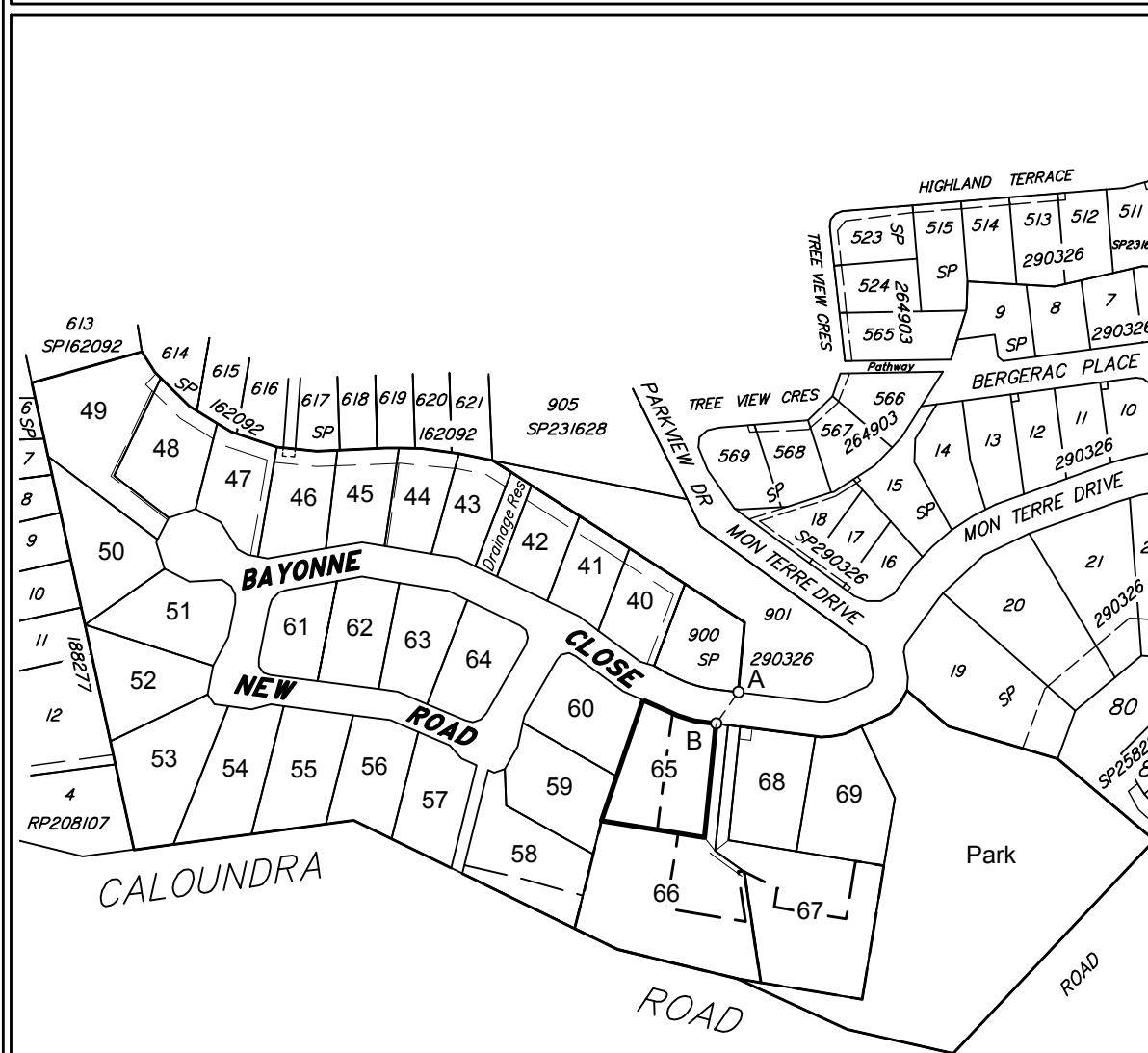


Dated 27th June 2018

This plan shows details of proposed allotment 65 on the Plan of Development 07019 DA-01 dated 25 February 2010 which complies with a Subdivision Application approved by Sunshine Coast Regional Council, subject to conditions.

The area being proposed allotment 65 described as part of Lot 611 on SP290326, and situated at Bayonne Close, Little Mountain.

The allotment is located from the south eastern most point of Lot 900 on SP290326 to proposed allotment 65 with a cadastral connection (A-B) as shown, containing an area of 1811 square metres, more or less.



DETAIL SURVEY COMPLETED 13/12/2010.

ENGINEERING DESIGN BY COVEY ASSOCIATES
PTY LTD PLANS 172121-A DATED 18.12.2018

Cadastral Connection

A-B 215°02' 15.83

Scale 1:3000 – Lengths are in Metres.

